

## Calmegin Rabbit mAb

Catalog No: #56683

Package Size: #56683-1 50ul #56683-2 100ul

Orders: order@signalwayantibody.com

Support: tech@signalwayantibody.com

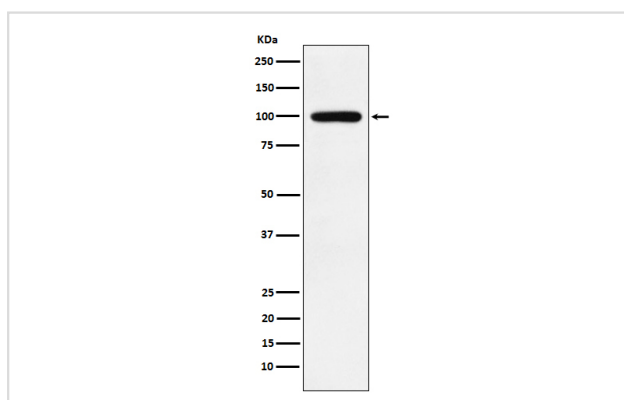
## Description

Product Name	Calmegin Rabbit mAb
Host Species	Rabbit
Clonality	Monoclonal
Isotype	Rabbit IgG
Purification	Affinity-chromatography
Applications	WB IHC ICC/IF IP FC
Species Reactivity	Human Mouse Rat
Specificity	Calmegin Antibody detects endogenous levels of total Calmegin
Immunogen Description	A synthesized peptide derived from human Calmegin
Other Names	CLGN; MEG 1 antigen; Calnexin-T; Calmegin precursor; Calmegin;
Accession No.	Uniprot:O14967
Uniprot	O14967
Calculated MW	100kDa
Formulation	Rabbit IgG in phosphate buffered saline , pH 7.4, 150mM NaCl, 0.02% sodium azide and 50% glycerol.
Storage	Store at +4 $\Lambda$ C short term. Store at -20 $\Lambda$ C long term. Avoid freeze / thaw cycle.

## Application Details

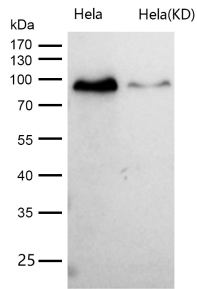
WB:1:1000~1:5000IHC:1:50~1:200ICC/IF:1:50~1:200IP:1:50FC:1:50

## Images



Western blot analysis of Calmegin expression in Jurkat cell lysate.

All lanes use the Antibody at 1:2K dilution for 1 hour at room temperature.



## Product Description

Functions during spermatogenesis as a chaperone for a range of client proteins that are important for sperm adhesion onto the egg zona pellucida and for subsequent penetration of the zona pellucida. Required for normal sperm migration from the uterus into the oviduct. Required for normal male fertility. Binds calcium ions (By similarity).

Note: This product is for in vitro research use only