

FE65 Rabbit mAb

Catalog No: #56684

Package Size: #56684-1 50ul #56684-2 100ul

Orders: order@signalwayantibody.comSupport: tech@signalwayantibody.com

Description

Product Name	FE65 Rabbit mAb
Host Species	Rabbit
Clonality	Monoclonal
Isotype	Rabbit IgG
Purification	Affinity-chromatography
Applications	WB IHC ICC/IF
Species Reactivity	Human
Specificity	FE65 Antibody detects endogenous levels of total FE65
Immunogen Description	A synthesized peptide derived from human FE65
Other Names	APBB1; Protein Fe65; RIR;
Accession No.	Uniprot:O00213
Uniprot	O00213
Calculated MW	100kDa
Formulation	Rabbit IgG in phosphate buffered saline , pH 7.4, 150mM NaCl, 0.02% sodium azide and 50% glycerol.
Storage	Store at +4Λ C short term. Store at -20Λ C long term. Avoid freeze / thaw cycle.

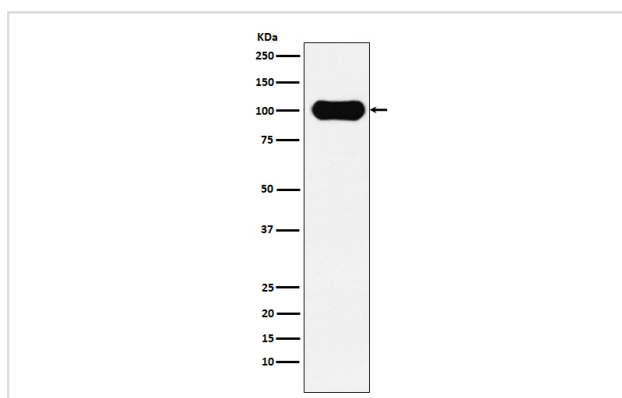
Application Details

WB: 1:500~1:2000

IHC: 1:50~1:200

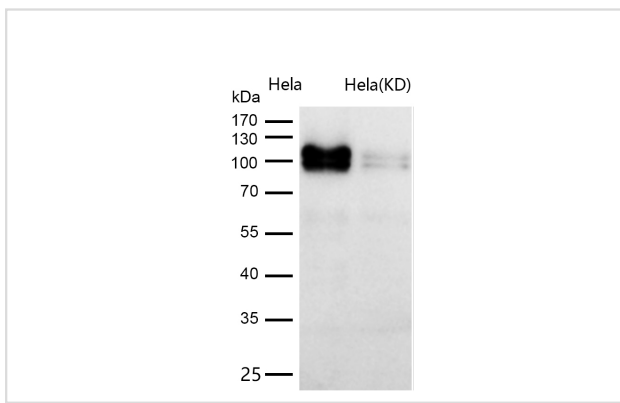
ICC/IF: 1:50~1:200

Images



Western blot analysis of FE65 expression in SH-SY5Y cell lysate.

All lanes use the Antibody at 1:1K dilution for 1 hour at room temperature.



Product Description

Transcription coregulator that can have both coactivator and corepressor functions. Adapter protein that forms a transcriptionally active complex with the gamma-secretase-derived amyloid precursor protein (APP) intracellular domain. Plays a central role in the response to DNA damage by translocating to the nucleus and inducing apoptosis.

Note: This product is for in vitro research use only