

ApoM Rabbit mAb

Catalog No: #56685

Package Size: #56685-1 50ul #56685-2 100ul

Orders: order@signalwayantibody.com

Support: tech@signalwayantibody.com

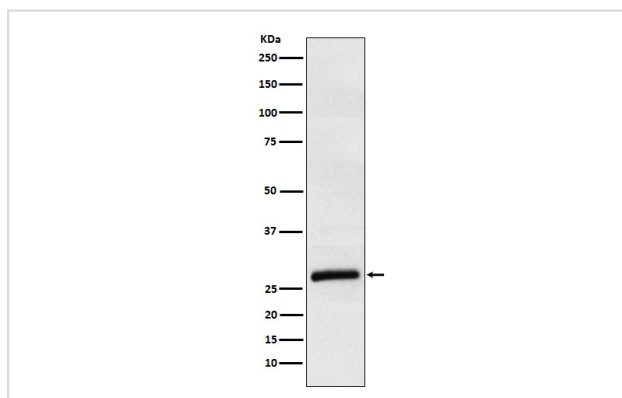
Description

Product Name	ApoM Rabbit mAb
Host Species	Rabbit
Clonality	Monoclonal
Isotype	Rabbit IgG
Purification	Affinity-chromatography
Applications	WB IHC FC
Species Reactivity	Human
Specificity	ApoM Antibody detects endogenous levels of total ApoM
Immunogen Description	A synthesized peptide derived from human ApoM
Other Names	Apo M; Apolipoprotein M; ApoM; G3A; NG20;
Accession No.	Uniprot:O95445
Uniprot	O95445
Calculated MW	25kDa
Formulation	Rabbit IgG in phosphate buffered saline , pH 7.4, 150mM NaCl, 0.02% sodium azide and 50% glycerol.
Storage	Store at +4Λ C short term. Store at -20Λ C long term. Avoid freeze / thaw cycle.

Application Details

WB:1:500~1:2000IHC:1:50~1:200FC:1:60

Images



Western blot analysis of ApoM expression in Human plasma lysate.

Product Description

Probably involved in lipid transport. Can bind sphingosine-1-phosphate, myristic acid, palmitic acid and stearic acid, retinol, all-trans-retinoic acid and 9-cis-retinoic acid.

Note: This product is for in vitro research use only