

ApoD Rabbit mAb

Catalog No: #56687

Package Size: #56687-1 50ul #56687-2 100ul

Orders: order@signalwayantibody.com

Support: tech@signalwayantibody.com

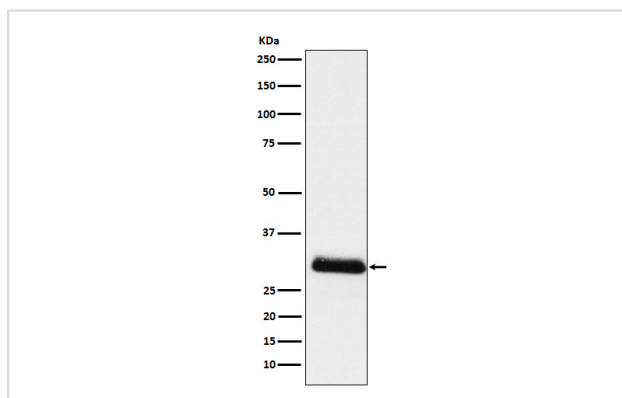
Description

| | |
|-----------------------|--|
| Product Name | ApoD Rabbit mAb |
| Host Species | Rabbit |
| Clonality | Monoclonal |
| Isotype | Rabbit IgG |
| Purification | Affinity-chromatography |
| Applications | WB IHC |
| Species Reactivity | Human |
| Specificity | ApoD Antibody detects endogenous levels of total ApoD |
| Immunogen Description | A synthesized peptide derived from human ApoD |
| Other Names | ApoD; ApolipoproteinD; |
| Accession No. | Uniprot:P05090 |
| Uniprot | P05090 |
| Calculated MW | 28kDa |
| Formulation | Rabbit IgG in phosphate buffered saline , pH 7.4, 150mM NaCl, 0.02% sodium azide and 50% glycerol. |
| Storage | Store at +4Λ C short term. Store at -20Λ C long term. Avoid freeze / thaw cycle. |

Application Details

WB:1:500~1:2000IHC:1:50~1:200

Images



Western blot analysis of ApoD expression in Human plasma lysate.

Product Description

APOD occurs in the macromolecular complex with lecithin-cholesterol acyltransferase. It is probably involved in the transport and binding of bilin. Appears to be able to transport a variety of ligands in a number of different contexts.

Note: This product is for in vitro research use only