

AP2 alpha Rabbit mAb

Catalog No: #56689

Package Size: #56689-1 50ul #56689-2 100ul

Orders: order@signalwayantibody.com

Support: tech@signalwayantibody.com

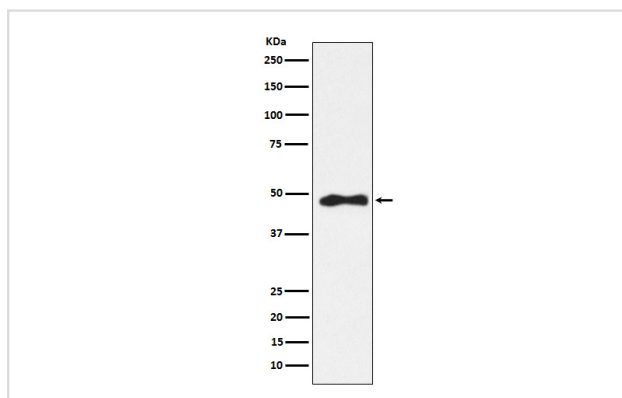
Description

Product Name	AP2 alpha Rabbit mAb
Host Species	Rabbit
Clonality	Monoclonal
Isotype	Rabbit IgG
Purification	Affinity-chromatography
Applications	WB IHC ICC/IF IP FC
Species Reactivity	Human Mouse Rat
Specificity	AP2 alpha Antibody detects endogenous levels of total AP2 alpha
Immunogen Description	A synthesized peptide derived from human AP2 alpha
Other Names	AP 2alpha; AP-2; AP2; AP2TF; BOFS; TFAP2; TFAP2A;
Accession No.	Uniprot:P05549
Uniprot	P05549
Calculated MW	48kDa
Formulation	Rabbit IgG in phosphate buffered saline , pH 7.4, 150mM NaCl, 0.02% sodium azide and 50% glycerol.
Storage	Store at +4 Λ C short term. Store at -20 Λ C long term. Avoid freeze / thaw cycle.

Application Details

WB:1:500~1:2000IHC:1:50~1:200ICC/IF:1:50~1:200IP:1:50FC:1:50

Images



Western blot analysis of AP2 alpha expression in HeLa cell lysate.

Product Description

Sequence-specific DNA-binding protein that interacts with inducible viral and cellular enhancer elements to regulate transcription of selected genes. AP-2 factors bind to the consensus sequence 5'-GCCNNNGGC-3' and activate genes involved in a large spectrum of important biological functions including proper eye, face, body wall, limb and neural tube development.

Note: This product is for in vitro research use only