

RAD23A Rabbit mAb

Catalog No: #56693

Package Size: #56693-1 50ul #56693-2 100ul

Orders: order@signalwayantibody.com

Support: tech@signalwayantibody.com

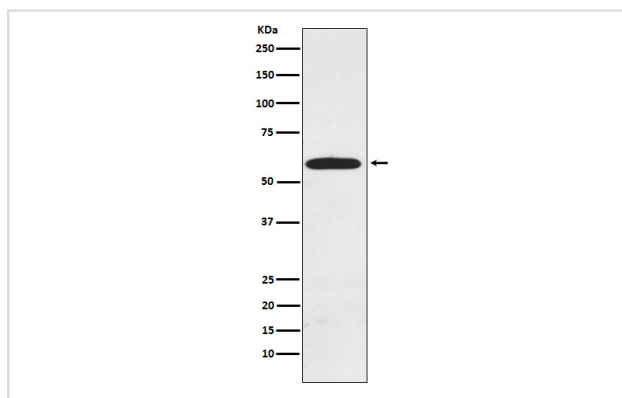
Description

Product Name	RAD23A Rabbit mAb
Host Species	Rabbit
Clonality	Monoclonal
Isotype	Rabbit IgG
Purification	Affinity-chromatography
Applications	WB FC
Species Reactivity	Human Mouse Rat
Specificity	RAD23A Antibody detects endogenous levels of total RAD23A
Immunogen Description	A synthesized peptide derived from human RAD23A
Other Names	hHR23A; HR23A; RAD 23a; RAD23A;
Accession No.	Uniprot:P54725
Uniprot	P54725
Calculated MW	55kDa
Formulation	Rabbit IgG in phosphate buffered saline , pH 7.4, 150mM NaCl, 0.02% sodium azide and 50% glycerol.
Storage	Store at +4Λ C short term. Store at -20Λ C long term. Avoid freeze / thaw cycle.

Application Details

WB:1:1000~1:5000FC:1:50

Images



Western blot analysis of RAD23A expression in MCF7 cell lysate.

Product Description

Multiubiquitin chain receptor involved in modulation of proteasomal degradation. Binds to 'Lys-48'-linked polyubiquitin chains in a length-dependent manner and with a lower affinity to 'Lys-63'-linked polyubiquitin chains.

Note: This product is for in vitro research use only