

CARD11 Rabbit mAb

Catalog No: #56704

Package Size: #56704-1 50ul #56704-2 100ul

Orders: order@signalwayantibody.com

Support: tech@signalwayantibody.com

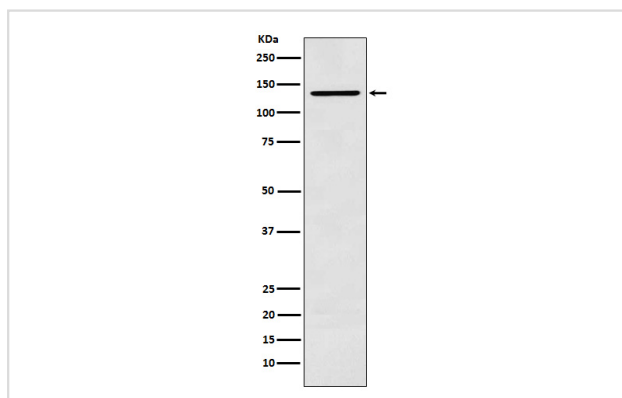
Description

Product Name	CARD11 Rabbit mAb
Host Species	Rabbit
Clonality	Monoclonal
Isotype	Rabbit IgG
Purification	Affinity-chromatography
Applications	WB ICC/IF
Species Reactivity	Human Mouse
Specificity	CARD11 Antibody detects endogenous levels of total CARD11
Immunogen Description	A synthesized peptide derived from human CARD11
Other Names	CARD11; CARMA1; Carma 1; BIMP3;
Accession No.	Uniprot:Q9BXL7
Uniprot	Q9BXL7
Calculated MW	133kDa
Formulation	Rabbit IgG in phosphate buffered saline , pH 7.4, 150mM NaCl, 0.02% sodium azide and 50% glycerol.
Storage	Store at +4 Λ C short term. Store at -20 Λ C long term. Avoid freeze / thaw cycle.

Application Details

WB: 1:500~1:2000 ICC/IF: 1:50~1:200

Images



Western blot analysis of CARD11 expression in K562 cell lysate.

Product Description

Involved in the costimulatory signal essential for T-cell receptor (TCR)-mediated T-cell activation. Its binding to DPP4 induces T-cell proliferation and NF-kappa-B activation in a T-cell receptor/CD3-dependent manner. Activates NF-kappa-B via BCL10 and IKK. Stimulates the phosphorylation of BCL10.

Note: This product is for in vitro research use only