

CSNK1A1 Rabbit mAb

Catalog No: #56709

Package Size: #56709-1 50ul #56709-2 100ul

Orders: order@signalwayantibody.com

Support: tech@signalwayantibody.com

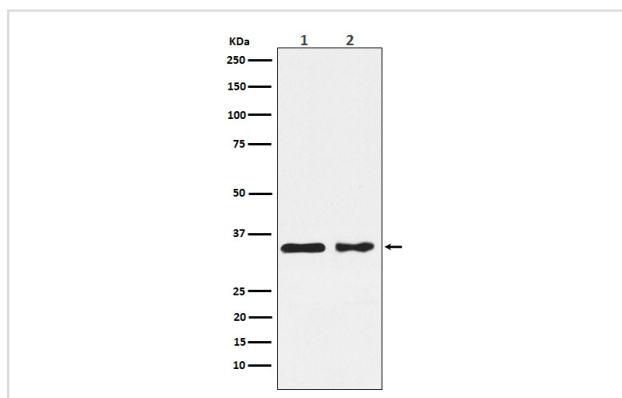
Description

Product Name	CSNK1A1 Rabbit mAb
Host Species	Rabbit
Clonality	Monoclonal
Isotype	Rabbit IgG
Purification	Affinity-chromatography
Applications	WB
Species Reactivity	Human Mouse Rat
Specificity	CSNK1A1 Antibody detects endogenous levels of total CSNK1A1
Immunogen Description	A synthesized peptide derived from human CSNK1A1
Other Names	CK1; CK1A; CKI alpha; CKIa; Csnk1a1; HLCDGP1;
Accession No.	Uniprot:P48729
Uniprot	P48729
Calculated MW	35kDa
Formulation	Rabbit IgG in phosphate buffered saline , pH 7.4, 150mM NaCl, 0.02% sodium azide and 50% glycerol.
Storage	Store at +4Λ C short term. Store at -20Λ C long term. Avoid freeze / thaw cycle.

Application Details

WB: 1:500~1:2000

Images



Western blot analysis of CSNK1A1 expression in (1) MCF7 cell lysate; (2) NIH/3T3 cell lysate.

Product Description

Casein kinases are operationally defined by their preferential utilization of acidic proteins such as caseins as substrates. It can phosphorylate a large number of proteins. Participates in Wnt signaling. Phosphorylates CTNNB1 at 'Ser-45'. May play a role in segregating chromosomes during mitosis.

Note: This product is for in vitro research use only