

SLAMF1 Rabbit mAb

Catalog No: #56713

Package Size: #56713-1 50ul #56713-2 100ul

Orders: order@signalwayantibody.com

Support: tech@signalwayantibody.com

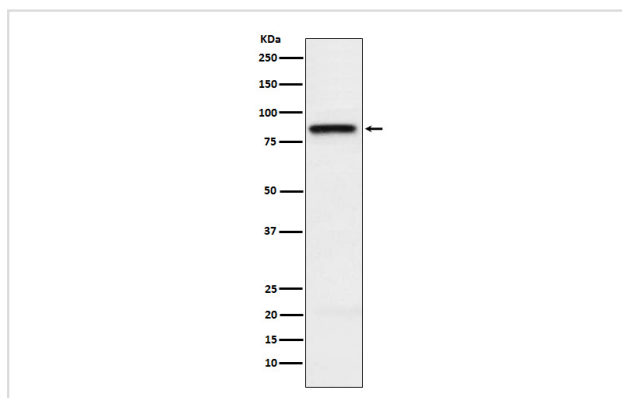
Description

Product Name	SLAMF1 Rabbit mAb
Host Species	Rabbit
Clonality	Monoclonal
Isotype	Rabbit IgG
Purification	Affinity-chromatography
Applications	WB IP FC
Species Reactivity	Human
Specificity	SLAMF1 Antibody detects endogenous levels of total SLAMF1
Immunogen Description	A synthesized peptide derived from human SLAMF1
Other Names	CD150; CDw150; SLAM; SLAMF1;
Accession No.	Uniprot:Q13291
Uniprot	Q13291
Calculated MW	85kDa
Formulation	Rabbit IgG in phosphate buffered saline , pH 7.4, 150mM NaCl, 0.02% sodium azide and 50% glycerol.
Storage	Store at +4 Λ C short term. Store at -20 Λ C long term. Avoid freeze / thaw cycle.

Application Details

WB:1:500~1:2000IP:1:50FC:1:50

Images



Western blot analysis of SLAMF1 expression in Jurkat cell lysate.

Product Description

High-affinity self-ligand important in bidirectional T-cell to B-cell stimulation. SLAM-induced signal-transduction events in T-lymphocytes are different from those in B-cells.

Note: This product is for in vitro research use only