

## Pannexin 1 Rabbit mAb

Catalog No: #56718

Package Size: #56718-1 50ul #56718-2 100ul

Orders: order@signalwayantibody.com

Support: tech@signalwayantibody.com

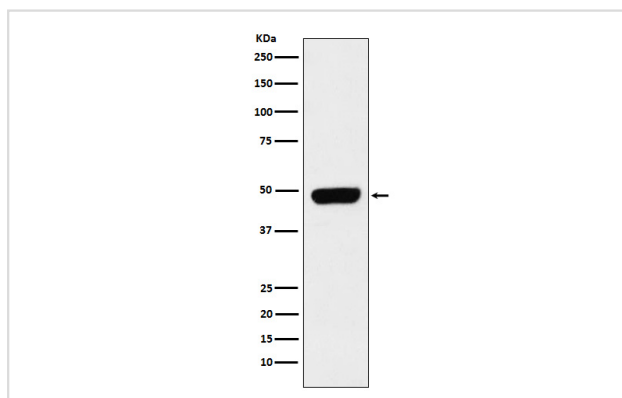
## Description

Product Name	Pannexin 1 Rabbit mAb
Host Species	Rabbit
Clonality	Monoclonal
Isotype	Rabbit IgG
Purification	Affinity-chromatography
Applications	WB IP
Species Reactivity	Human
Specificity	Pannexin 1 Antibody detects endogenous levels of total Pannexin 1
Immunogen Description	A synthesized peptide derived from human Pannexin 1
Other Names	innexin; MRS1; Pannexin 1; Panx1; PX1;
Accession No.	Uniprot:Q96RD7
Uniprot	Q96RD7
Calculated MW	48kDa
Formulation	Rabbit IgG in phosphate buffered saline , pH 7.4, 150mM NaCl, 0.02% sodium azide and 50% glycerol.
Storage	Store at +4 $\Lambda$ C short term. Store at -20 $\Lambda$ C long term. Avoid freeze / thaw cycle.

## Application Details

WB:1:500~1:2000IP:1:50

## Images



Western blot analysis of Pannexin 1 expression in Caco-2 cell lysate.

## Product Description

Structural component of the gap junctions and the hemichannels. May play a role as a Ca(2+)-leak channel to regulate ER Ca(2+) homeostasis.

---

Note: This product is for in vitro research use only