

ADAM15 Rabbit mAb

Catalog No: #56719

Package Size: #56719-1 50ul #56719-2 100ul

Orders: order@signalwayantibody.com

Support: tech@signalwayantibody.com

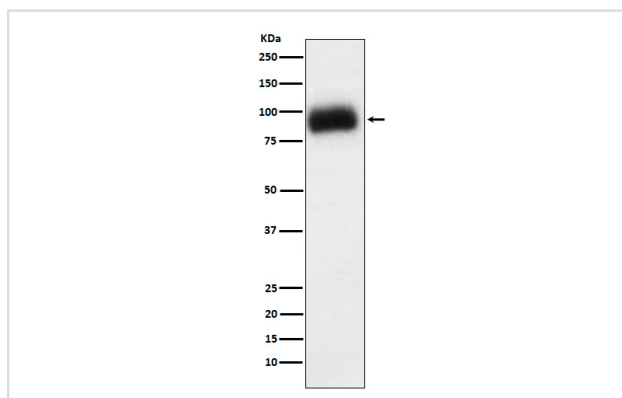
Description

Product Name	ADAM15 Rabbit mAb
Host Species	Rabbit
Clonality	Monoclonal
Isotype	Rabbit IgG
Purification	Affinity-chromatography
Applications	WB IHC
Species Reactivity	Human
Specificity	ADAM15 Antibody detects endogenous levels of total ADAM15
Immunogen Description	A synthesized peptide derived from human ADAM15
Other Names	Adam15; MDC15; Metargidin;
Accession No.	Uniprot:Q13444
Uniprot	Q13444
Calculated MW	90,100kDa
Formulation	Rabbit IgG in phosphate buffered saline , pH 7.4, 150mM NaCl, 0.02% sodium azide and 50% glycerol.
Storage	Store at +4Λ C short term. Store at -20Λ C long term. Avoid freeze / thaw cycle.

Application Details

WB: 1:500~1:2000 IHC: 1:50~1:200

Images



Western blot analysis of ADAM15 expression in SW480 cell lysate.

Product Description

Active metalloproteinase with gelatinolytic and collagenolytic activity. Plays a role in the wound healing process. Mediates both heterotypic intraepithelial cell/T-cell interactions and homotypic T-cell aggregation. Inhibits beta-1 integrin-mediated cell adhesion and migration of airway smooth muscle cells.

Note: This product is for in vitro research use only