

## Ephrin A1 Rabbit mAb

Catalog No: #56721

Package Size: #56721-1 50ul #56721-2 100ul

Orders: order@signalwayantibody.com

Support: tech@signalwayantibody.com

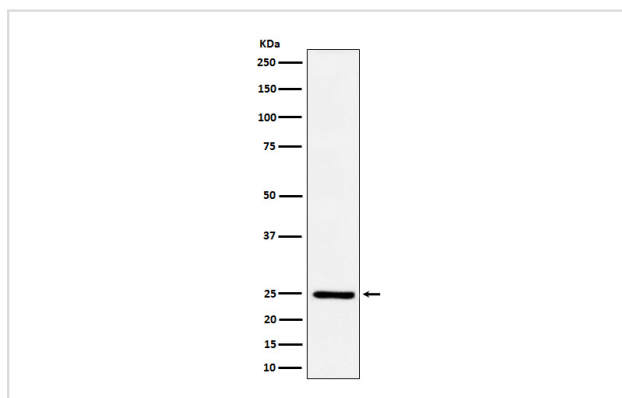
## Description

Product Name	Ephrin A1 Rabbit mAb
Host Species	Rabbit
Clonality	Monoclonal
Isotype	Rabbit IgG
Purification	Affinity-chromatography
Applications	WB
Species Reactivity	Human
Specificity	Ephrin A1 Antibody detects endogenous levels of total Ephrin A1
Immunogen Description	A synthesized peptide derived from human Ephrin A1
Other Names	B61; EFL1; ECKLG; EPLG1; LERK1; LERK-1; TNFAIP4;
Accession No.	Uniprot:P20827
Uniprot	P20827
Calculated MW	24kDa
Formulation	Rabbit IgG in phosphate buffered saline , pH 7.4, 150mM NaCl, 0.02% sodium azide and 50% glycerol.
Storage	Store at +4Λ C short term. Store at -20Λ C long term. Avoid freeze / thaw cycle.

## Application Details

WB: 1:500~1:2000

## Images



Western blot analysis of Ephrin A1 expression in HUVEC cell treated with TNF alpha.

## Product Description

Plays an important role in angiogenesis and tumor neovascularization. The recruitment of VAV2, VAV3 and PI3-kinase p85 subunit by phosphorylated EPHA2 is critical for EFNA1-induced RAC1 GTPase activation and vascular endothelial cell migration and assembly (By similarity).

---

Note: This product is for in vitro research use only