

WIF1 Rabbit mAb

Catalog No: #56726

Package Size: #56726-1 50ul #56726-2 100ul

Orders: order@signalwayantibody.com

Support: tech@signalwayantibody.com

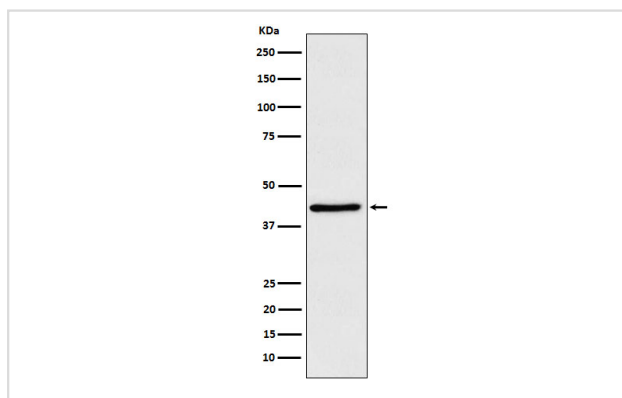
Description

Product Name	WIF1 Rabbit mAb
Host Species	Rabbit
Clonality	Monoclonal
Isotype	Rabbit IgG
Purification	Affinity-chromatography
Applications	WB IP
Species Reactivity	Human Mouse Rat
Specificity	WIF1 Antibody detects endogenous levels of total WIF1
Immunogen Description	A synthesized peptide derived from human WIF1
Other Names	wif1; Wnt inhibitory factor 1;
Accession No.	Uniprot:Q9Y5W5
Uniprot	Q9Y5W5
Calculated MW	41kDa
Formulation	Rabbit IgG in phosphate buffered saline , pH 7.4, 150mM NaCl, 0.02% sodium azide and 50% glycerol.
Storage	Store at +4Λ C short term. Store at -20Λ C long term. Avoid freeze / thaw cycle.

Application Details

WB: 1:500~1:2000 IP: 1:50

Images



Western blot analysis of WIF1 expression in HeLa cell lysate.

Product Description

Binds to WNT proteins and inhibits their activities. May be involved in mesoderm segmentation.

Note: This product is for in vitro research use only