

AKR1C1 / AKR1C2 Rabbit mAb

Catalog No: #56730

Package Size: #56730-1 50ul #56730-2 100ul

Orders: order@signalwayantibody.com

Support: tech@signalwayantibody.com

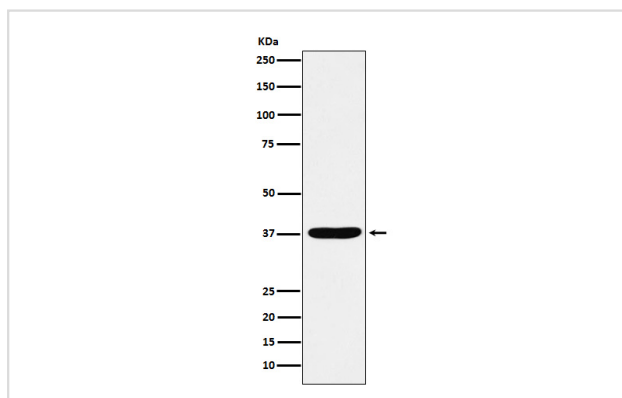
Description

Product Name	AKR1C1 / AKR1C2 Rabbit mAb
Host Species	Rabbit
Clonality	Monoclonal
Isotype	Rabbit IgG
Purification	Affinity-chromatography
Applications	WB FC
Species Reactivity	Human Mouse Rat
Specificity	AKR1C1 / AKR1C2 Antibody detects endogenous levels of total AKR1C1 / AKR1C2
Immunogen Description	A synthesized peptide derived from human AKR1C1 / AKR1C2
Other Names	AKR1C1; AKR1C2;
Accession No.	Uniprot:Q04828/P52895
Uniprot	Q04828/P52895
Calculated MW	37kDa
Formulation	Rabbit IgG in phosphate buffered saline , pH 7.4, 150mM NaCl, 0.02% sodium azide and 50% glycerol.
Storage	Store at +4Λ C short term. Store at -20Λ C long term. Avoid freeze / thaw cycle.

Application Details

WB:1:500~1:2000FC:1:50

Images



Western blot analysis of AKR1C1/AKR1C2 expression in HepG2 cell lysate.

Product Description

In the liver and intestine, may have a role in the transport of bile. May have a role in monitoring the intrahepatic bile acid concentration. Has a low bile-binding ability. May play a role in myelin formation.

Note: This product is for in vitro research use only