

## Gemin 3 Rabbit mAb

Catalog No: #56732

Package Size: #56732-1 50ul #56732-2 100ul

Orders: order@signalwayantibody.com

Support: tech@signalwayantibody.com

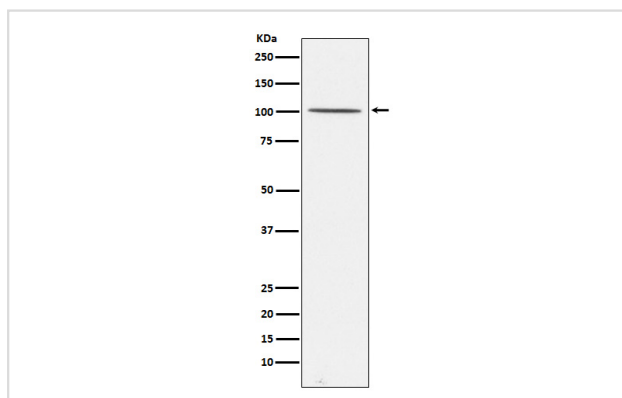
## Description

Product Name	Gemin 3 Rabbit mAb
Host Species	Rabbit
Clonality	Monoclonal
Isotype	Rabbit IgG
Purification	Affinity-chromatography
Applications	WB IHC ICC/IF FC
Species Reactivity	Human Mouse
Specificity	Gemin 3 Antibody detects endogenous levels of total Gemin 3
Immunogen Description	A synthesized peptide derived from human Gemin 3
Other Names	ddx20; DP103; Gemin3; SMN interacting protein;
Accession No.	Uniprot:Q9UHI6
Uniprot	Q9UHI6
Calculated MW	100kDa
Formulation	Rabbit IgG in phosphate buffered saline , pH 7.4, 150mM NaCl, 0.02% sodium azide and 50% glycerol.
Storage	Store at +4Λ C short term. Store at -20Λ C long term. Avoid freeze / thaw cycle.

## Application Details

WB:1:500~1:2000IHC:1:50~1:200ICC/IF:1:50~1:200FC:1:100

## Images



Western blot analysis of Gemin 3 expression in 293T cell lysate.

## Product Description

The SMN complex plays an essential role in spliceosomal snRNP assembly in the cytoplasm and is required for pre-mRNA splicing in the nucleus. It may also play a role in the metabolism of snoRNPs.

---

Note: This product is for in vitro research use only