

FOXF1 Rabbit mAb

Catalog No: #56734

Package Size: #56734-1 50ul #56734-2 100ul

Orders: order@signalwayantibody.com

Support: tech@signalwayantibody.com

Description

Product Name	FOXF1 Rabbit mAb
Host Species	Rabbit
Clonality	Monoclonal
Isotype	Rabbit IgG
Purification	Affinity-chromatography
Applications	WB ICC/IF FC
Species Reactivity	Human
Specificity	FOXF1 Antibody detects endogenous levels of total FOXF1
Immunogen Description	A synthesized peptide derived from human FOXF1
Other Names	FKHL5; foxf1; FREAC1; HFH 8;
Accession No.	Uniprot:Q12946
Uniprot	Q12946
Calculated MW	40kDa
Formulation	Rabbit IgG in phosphate buffered saline , pH 7.4, 150mM NaCl, 0.02% sodium azide and 50% glycerol.
Storage	Store at +4°C short term. Store at -20°C long term. Avoid freeze / thaw cycle.

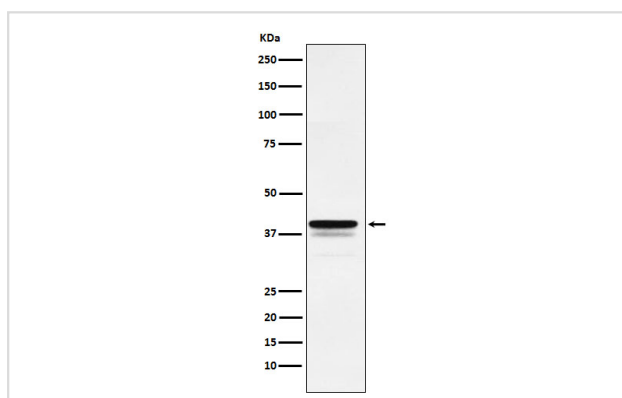
Application Details

WB: 1:500~1:2000

ICC/IF: 1:50~1:200

FC: 1:100

Images



Western blot analysis of FOXF1 expression in HeLa cell lysate.

Product Description

Probable transcription activator for a number of lung-specific genes.

Note: This product is for in vitro research use only