

## PSAP Rabbit mAb

Catalog No: #56735

Package Size: #56735-1 50ul #56735-2 100ul

Orders: order@signalwayantibody.com

Support: tech@signalwayantibody.com

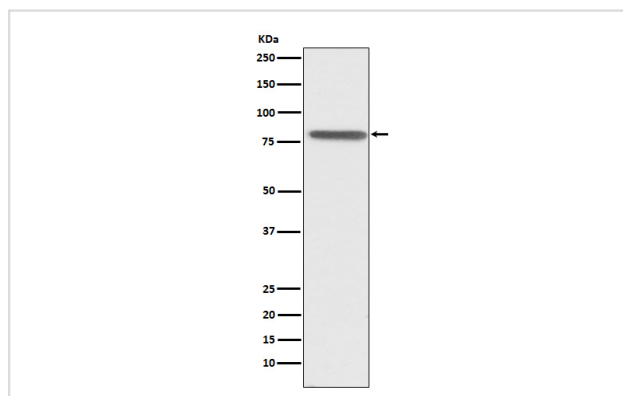
## Description

Product Name	PSAP Rabbit mAb
Host Species	Rabbit
Clonality	Monoclonal
Isotype	Rabbit IgG
Purification	Affinity-chromatography
Applications	WB IHC
Species Reactivity	Human
Specificity	PSAP Antibody detects endogenous levels of total PSAP
Immunogen Description	A synthesized peptide derived from human PSAP
Other Names	GLBA; SAP1; Saposins; Dispersin;
Accession No.	Uniprot:P07602
Uniprot	P07602
Calculated MW	78kDa
Formulation	Rabbit IgG in phosphate buffered saline , pH 7.4, 150mM NaCl, 0.02% sodium azide and 50% glycerol.
Storage	Store at +4ℳ C short term. Store at -20ℳ C long term. Avoid freeze / thaw cycle.

## Application Details

WB:1:1000~1:5000IHC:1:50~1:200

## Images



Western blot analysis of PSAP expression in HepG2 cell lysate.

## Product Description

The lysosomal degradation of sphingolipids takes place by the sequential action of specific hydrolases. Some of these enzymes require specific low-molecular mass, non-enzymic proteins: the sphingolipids activator proteins (coproteins).

---

Note: This product is for in vitro research use only