

PLCG2 Rabbit mAb

Catalog No: #56738

Package Size: #56738-1 50ul #56738-2 100ul

Orders: order@signalwayantibody.com

Support: tech@signalwayantibody.com

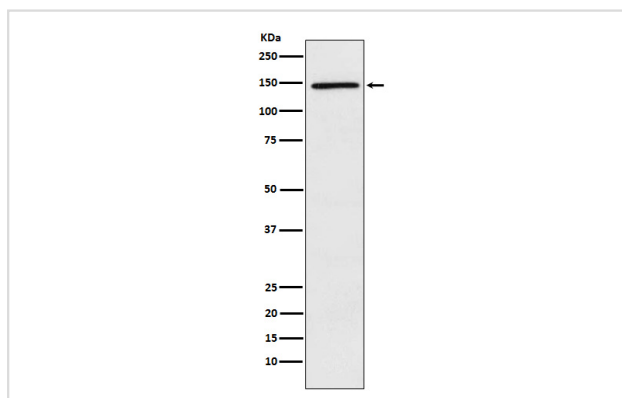
Description

Product Name	PLCG2 Rabbit mAb
Host Species	Rabbit
Clonality	Monoclonal
Isotype	Rabbit IgG
Purification	Affinity-chromatography
Applications	WB IHC IP FC
Species Reactivity	Human
Specificity	PLCG2 Antibody detects endogenous levels of total PLCG2
Immunogen Description	A synthesized peptide derived from human PLCG2
Other Names	PLC 2; PLC gamma 2; PLC IV; PLC-IV; Plcg2;
Accession No.	Uniprot:P16885
Uniprot	P16885
Calculated MW	148kDa
Formulation	Rabbit IgG in phosphate buffered saline , pH 7.4, 150mM NaCl, 0.02% sodium azide and 50% glycerol.
Storage	Store at +4 Λ C short term. Store at -20 Λ C long term. Avoid freeze / thaw cycle.

Application Details

WB:1:1000~1:5000IHC:1:50~1:200IP:1:50FC:1:100

Images



Western blot analysis of PLCG 2 expression in Ramos cell lysate.

Product Description

The production of the second messenger molecules diacylglycerol (DAG) and inositol 1,4,5-trisphosphate (IP3) is mediated by activated phosphatidylinositol-specific phospholipase C enzymes. It is a crucial enzyme in transmembrane signaling.

Note: This product is for in vitro research use only