

## EBI3 Rabbit mAb

Catalog No: #56741

Package Size: #56741-1 50ul #56741-2 100ul

Orders: order@signalwayantibody.com

Support: tech@signalwayantibody.com

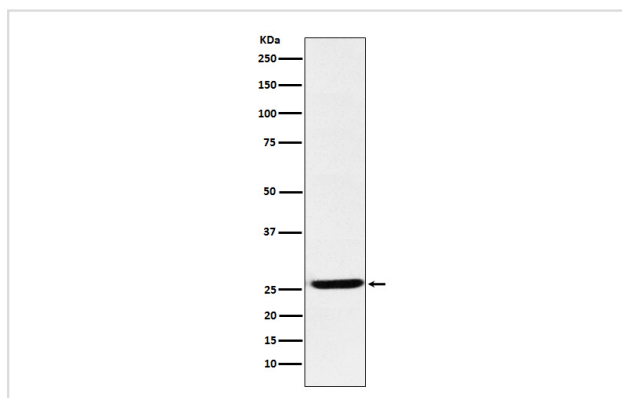
## Description

Product Name	EBI3 Rabbit mAb
Host Species	Rabbit
Clonality	Monoclonal
Isotype	Rabbit IgG
Purification	Affinity-chromatography
Applications	WB
Species Reactivity	Human Mouse Rat
Specificity	EBI3 Antibody detects endogenous levels of total EBI3
Immunogen Description	A synthesized peptide derived from human EBI3
Other Names	EBI3; IL-27B; IL27 subunit beta; IL27B; interleukin 27 subunit beta;
Accession No.	Uniprot:Q14213
Uniprot	Q14213
Calculated MW	25kDa
Formulation	Rabbit IgG in phosphate buffered saline , pH 7.4, 150mM NaCl, 0.02% sodium azide and 50% glycerol.
Storage	Store at +4Λ C short term. Store at -20Λ C long term. Avoid freeze / thaw cycle.

## Application Details

WB: 1:500~1:2000

## Images



Western blot analysis of EBI3 expression in K562 cell lysate.

## Product Description

Associates with IL27 to form the IL-27 interleukin, a heterodimeric cytokine which functions in innate immunity. IL-27 has pro- and anti-inflammatory properties, that can regulate T-helper cell development, suppress T-cell proliferation, stimulate cytotoxic T-cell activity, induce isotype switching in B-cells, and that has diverse effects on innate immune cells.

---

Note: This product is for in vitro research use only