

IMP2 Rabbit mAb

Catalog No: #56750

Package Size: #56750-1 50ul #56750-2 100ul

Orders: order@signalwayantibody.com

Support: tech@signalwayantibody.com

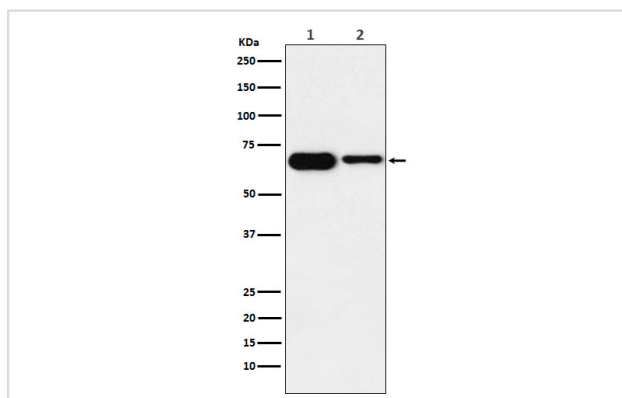
Description

Product Name	IMP2 Rabbit mAb
Host Species	Rabbit
Clonality	Monoclonal
Isotype	Rabbit IgG
Purification	Affinity-chromatography
Applications	WB IHC ICC/IF
Species Reactivity	Human Mouse Rat
Specificity	IMP2 Antibody detects endogenous levels of total IMP2
Immunogen Description	A synthesized peptide derived from human IMP2
Other Names	gf2bp2; IMP2; p62; VICKZ2;
Accession No.	Uniprot:Q9Y6M1
Uniprot	Q9Y6M1
Calculated MW	66,62kDa
Formulation	Rabbit IgG in phosphate buffered saline , pH 7.4, 150mM NaCl, 0.02% sodium azide and 50% glycerol.
Storage	Store at +4Λ C short term. Store at -20Λ C long term. Avoid freeze / thaw cycle.

Application Details

WB:1:500~1:2000IHC:1:50~1:200ICC/IF:1:50~1:200

Images



Western blot analysis of IMP2 expression in (1) SH-SY5Y cell lysate; (2) Mouse heart lysate.

Product Description

Binds to the 5'-UTR of the insulin-like growth factor 2 (IGF2) mRNAs. Binding is isoform-specific. May regulate translation of target mRNAs.

Note: This product is for in vitro research use only