

## ATP7b Rabbit mAb

Catalog No: #56752

Package Size: #56752-1 50ul #56752-2 100ul

Orders: [order@signalwayantibody.com](mailto:order@signalwayantibody.com)Support: [tech@signalwayantibody.com](mailto:tech@signalwayantibody.com)

## Description

Product Name	ATP7b Rabbit mAb
Host Species	Rabbit
Clonality	Monoclonal
Isotype	Rabbit IgG
Purification	Affinity-chromatography
Applications	WB ICC/IF FC
Species Reactivity	Human
Specificity	ATP7b Antibody detects endogenous levels of total ATP7b
Immunogen Description	A synthesized peptide derived from human ATP7b
Other Names	ATP7B; PWD; WC1; WD; WND; WND/140 kDa;
Accession No.	Uniprot:P35670
Uniprot	P35670
Calculated MW	157kDa
Formulation	Rabbit IgG in phosphate buffered saline , pH 7.4, 150mM NaCl, 0.02% sodium azide and 50% glycerol.
Storage	Store at +4 $\Lambda$ C short term. Store at -20 $\Lambda$ C long term. Avoid freeze / thaw cycle.

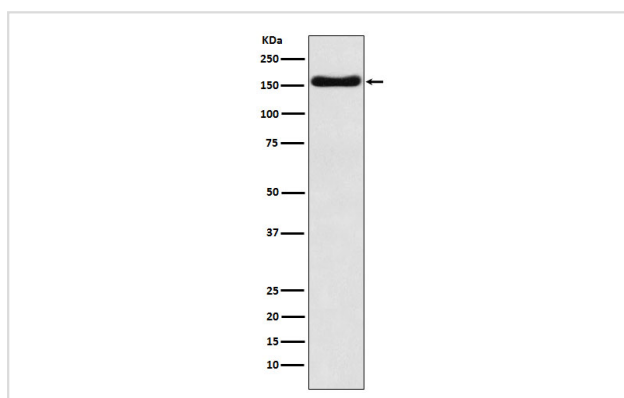
## Application Details

WB: 1:500~1:2000

ICC/IF: 1:50~1:200

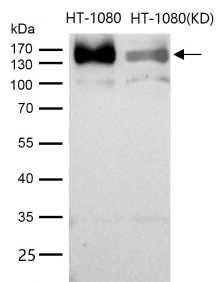
FC: 1:50

## Images



Western blot analysis of ATP7b expression in HepG2 cell lysate.

All lanes use the Antibody at 1:1K dilution for 1 hour at room temperature.



## Product Description

Involved in the export of copper out of the cells, such as the efflux of hepatic copper into the bile.

Note: This product is for in vitro research use only