

## Renin Rabbit mAb

Catalog No: #56753

Package Size: #56753-1 50ul #56753-2 100ul

Orders: order@signalwayantibody.com

Support: tech@signalwayantibody.com

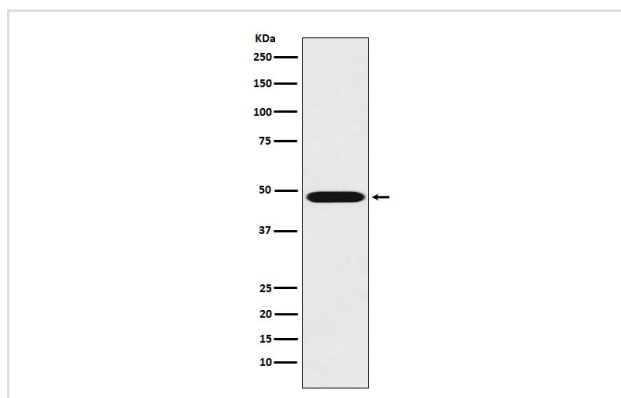
## Description

Product Name	Renin Rabbit mAb
Host Species	Rabbit
Clonality	Monoclonal
Isotype	Rabbit IgG
Purification	Affinity-chromatography
Applications	WB FC
Species Reactivity	Human
Specificity	Renin Antibody detects endogenous levels of total Renin
Immunogen Description	A synthesized peptide derived from human Renin
Other Names	Angiotensinogenase; HNFJ2; REN; Ren1; Renin;
Accession No.	Uniprot:P00797
Uniprot	P00797
Calculated MW	47kDa
Formulation	Rabbit IgG in phosphate buffered saline , pH 7.4, 150mM NaCl, 0.02% sodium azide and 50% glycerol.
Storage	Store at +4 $\Lambda$ C short term. Store at -20 $\Lambda$ C long term. Avoid freeze / thaw cycle.

## Application Details

WB:1:500~1:2000FC:1:50

## Images



Western blot analysis of Renin expression in K562 cell lysate.

## Product Description

Renin is a highly specific endopeptidase, whose only known function is to generate angiotensin I from angiotensinogen in the plasma, initiating a cascade of reactions that produce an elevation of blood pressure and increased sodium retention by the kidney.

---

Note: This product is for in vitro research use only