

KLK2 Rabbit mAb

Catalog No: #56754

Package Size: #56754-1 50ul #56754-2 100ul

Orders: order@signalwayantibody.com

Support: tech@signalwayantibody.com

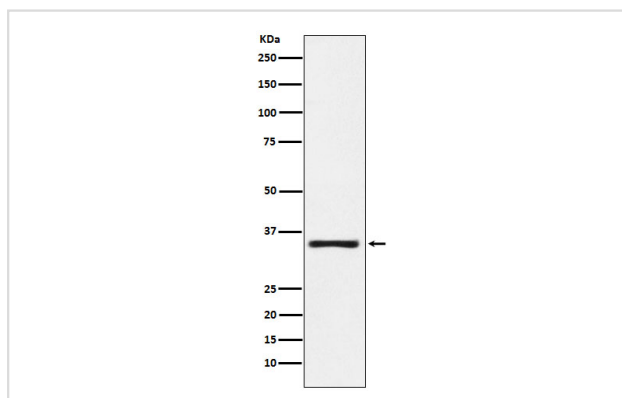
Description

Product Name	KLK2 Rabbit mAb
Host Species	Rabbit
Clonality	Monoclonal
Isotype	Rabbit IgG
Purification	Affinity-chromatography
Applications	WB ICC/IF
Species Reactivity	Human Mouse Rat
Specificity	KLK2 Antibody detects endogenous levels of total KLK2
Immunogen Description	A synthesized peptide derived from human KLK2
Other Names	hK2; hGK-1; KLK2A2;
Accession No.	Uniprot:P20151
Uniprot	P20151
Calculated MW	33kDa
Formulation	Rabbit IgG in phosphate buffered saline , pH 7.4, 150mM NaCl, 0.02% sodium azide and 50% glycerol.
Storage	Store at +4 Λ C short term. Store at -20 Λ C long term. Avoid freeze / thaw cycle.

Application Details

WB:1:500~1:2000 ICC/IF:1:50~1:200

Images



Western blot analysis of KLK2 expression in MOLT4 cell lysate.

Product Description

Glandular kallikreins cleave Met-Lys and Arg-Ser bonds in kininogen to release Lys-bradykinin.

Note: This product is for in vitro research use only