

ApoA Rabbit mAb

Catalog No: #56757

Package Size: #56757-1 50ul #56757-2 100ul

Orders: order@signalwayantibody.com

Support: tech@signalwayantibody.com

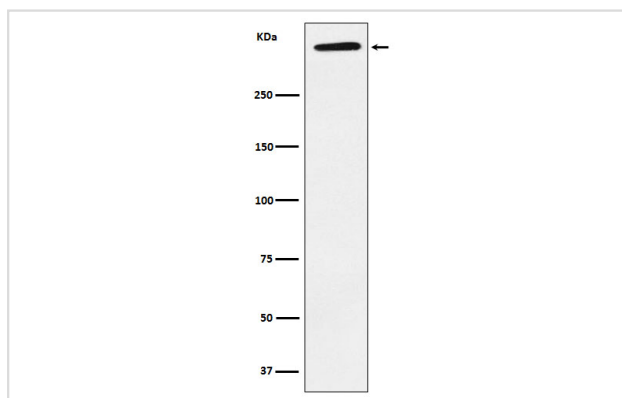
Description

Product Name	ApoA Rabbit mAb
Host Species	Rabbit
Clonality	Monoclonal
Isotype	Rabbit IgG
Purification	Affinity-chromatography
Applications	WB
Species Reactivity	Human
Specificity	ApoA Antibody detects endogenous levels of total ApoA
Immunogen Description	A synthesized peptide derived from human ApoA
Other Names	AK38; APOA; apolipoprotein(a); LP; lp(a); LPA;
Accession No.	Uniprot:P08519
Uniprot	P08519
Calculated MW	501kDa
Formulation	Rabbit IgG in phosphate buffered saline , pH 7.4, 150mM NaCl, 0.02% sodium azide and 50% glycerol.
Storage	Store at +4Λ C short term. Store at -20Λ C long term. Avoid freeze / thaw cycle.

Application Details

WB: 1:500~1:2000

Images



Western blot analysis of ApoA expression in Human plasma lysate.

Product Description

Lipoprotein(a) (Lp(a)) is a lipoprotein subclass assembled in the blood from low density lipoprotein (LDL) molecules and apolipoprotein-a (apo-a). Lp(a) recruits inflammatory cells through interaction with Mac-1 integrin.

Note: This product is for in vitro research use only