

## SESN1 Rabbit mAb

Catalog No: #56760

Package Size: #56760-1 50ul #56760-2 100ul

Orders: order@signalwayantibody.com

Support: tech@signalwayantibody.com

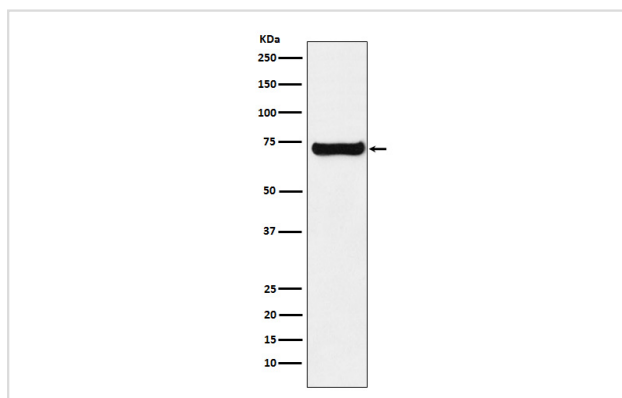
## Description

Product Name	SESN1 Rabbit mAb
Host Species	Rabbit
Clonality	Monoclonal
Isotype	Rabbit IgG
Purification	Affinity-chromatography
Applications	WB FC
Species Reactivity	Human Mouse Rat
Specificity	SESN1 Antibody detects endogenous levels of total SESN1
Immunogen Description	A synthesized peptide derived from human SESN1
Other Names	PA26; sesn1; SEST1; sestrin 1;
Accession No.	Uniprot:Q9Y6P5
Uniprot	Q9Y6P5
Calculated MW	70kDa
Formulation	Rabbit IgG in phosphate buffered saline , pH 7.4, 150mM NaCl, 0.02% sodium azide and 50% glycerol.
Storage	Store at +4 $\Lambda$ C short term. Store at -20 $\Lambda$ C long term. Avoid freeze / thaw cycle.

## Application Details

WB:1:500~1:2000FC:1:100

## Images



Western blot analysis of SESN1 expression in K562 cell lysate.

## Product Description

Involved in the reduction of peroxiredoxins. May also be regulator of cellular growth.

---

Note: This product is for in vitro research use only