

CSK Rabbit mAb

Catalog No: #56762

Package Size: #56762-1 50ul #56762-2 100ul

Orders: order@signalwayantibody.comSupport: tech@signalwayantibody.com

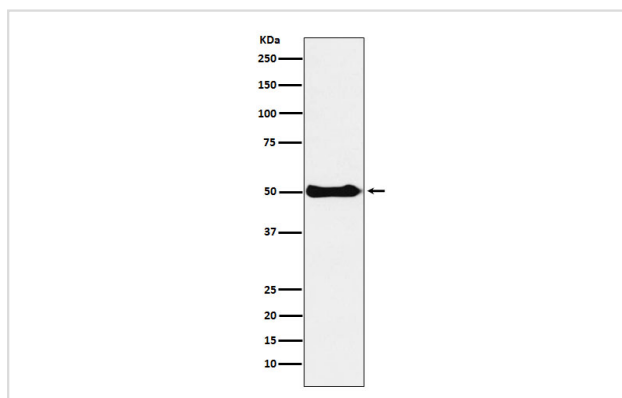
Description

Product Name	CSK Rabbit mAb
Host Species	Rabbit
Clonality	Monoclonal
Isotype	Rabbit IgG
Purification	Affinity-chromatography
Applications	WB IHC
Species Reactivity	Human Mouse Rat
Specificity	CSK Antibody detects endogenous levels of total CSK
Immunogen Description	A synthesized peptide derived from human CSK
Other Names	C SRC; Csk A; CSK; P60 Src;
Accession No.	Uniprot:P41240
Uniprot	P41240
Calculated MW	50kDa
Formulation	Rabbit IgG in phosphate buffered saline , pH 7.4, 150mM NaCl, 0.02% sodium azide and 50% glycerol.
Storage	Store at +4Λ C short term. Store at -20Λ C long term. Avoid freeze / thaw cycle.

Application Details

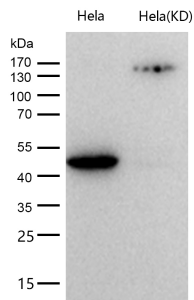
WB: 1:500~1:2000 IHC: 1:50~1:200

Images



Western blot analysis of CSK expression in Ramos cell lysate.

All lanes use the Antibody at 1:1K dilution for 1 hour at room temperature.



Product Description

Specifically phosphorylates 'Tyr-504' on LCK, which acts as a negative regulatory site. Can also act on the LYN and FYN kinases.

Note: This product is for in vitro research use only