

MADCAM1 Rabbit mAb

Catalog No: #56763

Package Size: #56763-1 50ul #56763-2 100ul

Orders: order@signalwayantibody.com

Support: tech@signalwayantibody.com

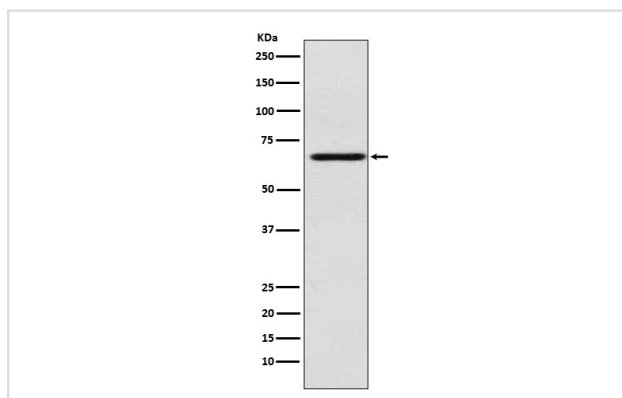
Description

Product Name	MADCAM1 Rabbit mAb
Host Species	Rabbit
Clonality	Monoclonal
Isotype	Rabbit IgG
Purification	Affinity-chromatography
Applications	WB
Species Reactivity	Human
Specificity	MADCAM1 Antibody detects endogenous levels of total MADCAM1
Immunogen Description	A synthesized peptide derived from human MADCAM1
Other Names	MACAM1; Madcam1;
Accession No.	Uniprot:Q13477
Uniprot	Q13477
Calculated MW	60kDa
Formulation	Rabbit IgG in phosphate buffered saline , pH 7.4, 150mM NaCl, 0.02% sodium azide and 50% glycerol.
Storage	Store at +4Λ C short term. Store at -20Λ C long term. Avoid freeze / thaw cycle.

Application Details

WB: 1:500~1:2000

Images



Western blot analysis of MADCAM1 expression in HUVEC cell lysate.

Product Description

Cell adhesion leukocyte receptor expressed by mucosal venules, helps to direct lymphocyte traffic into mucosal tissues including the Peyer patches and the intestinal lamina propria.

Note: This product is for in vitro research use only