

PIM2 Rabbit mAb

Catalog No: #56765

Package Size: #56765-1 50ul #56765-2 100ul

Orders: order@signalwayantibody.com

Support: tech@signalwayantibody.com

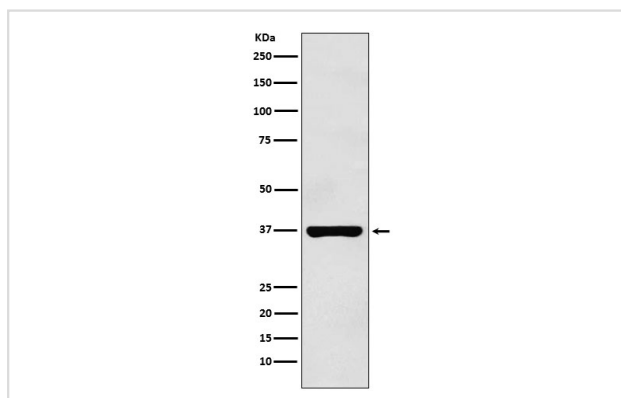
Description

Product Name	PIM2 Rabbit mAb
Host Species	Rabbit
Clonality	Monoclonal
Isotype	Rabbit IgG
Purification	Affinity-chromatography
Applications	WB ICC/IF IP
Species Reactivity	Human Mouse Rat
Specificity	PIM2 Antibody detects endogenous levels of total PIM2
Immunogen Description	A synthesized peptide derived from human PIM2
Other Names	PIM2; Pim2h;
Accession No.	Uniprot:Q9P1W9
Uniprot	Q9P1W9
Calculated MW	37kDa
Formulation	Rabbit IgG in phosphate buffered saline , pH 7.4, 150mM NaCl, 0.02% sodium azide and 50% glycerol.
Storage	Store at +4Λ C short term. Store at -20Λ C long term. Avoid freeze / thaw cycle.

Application Details

WB: 1:500~1:2000 ICC/IF: 1:50~1:200 IP: 1:50

Images



Western blot analysis of PIM2 expression in Raji cell lysate.

Product Description

Promotes cell survival in response to a variety of proliferative signals via positive regulation of the I-kappaB kinase/NF-kappaB cascade; this process requires phosphorylation of MAP3K8/COT. Prevents apoptosis induced by growth factor withdrawal via inhibition of caspase-3 activation, and via phosphorylation of pro-apoptotic proteins.

Note: This product is for in vitro research use only