

## PR3 Rabbit mAb

Catalog No: #56769

Package Size: #56769-1 50ul #56769-2 100ul

Orders: order@signalwayantibody.com

Support: tech@signalwayantibody.com

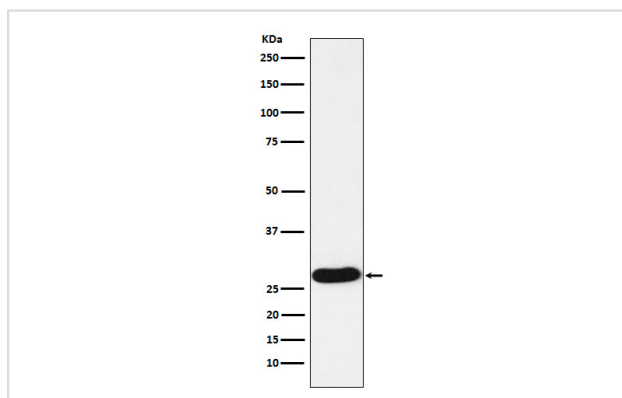
## Description

Product Name	PR3 Rabbit mAb
Host Species	Rabbit
Clonality	Monoclonal
Isotype	Rabbit IgG
Purification	Affinity-chromatography
Applications	WB IHC
Species Reactivity	Human
Specificity	PR3 Antibody detects endogenous levels of total PR3
Immunogen Description	A synthesized peptide derived from human PR3
Other Names	PRTN3; ACPA; CANCA;
Accession No.	Uniprot:P24158
Uniprot	P24158
Calculated MW	27kDa
Formulation	Rabbit IgG in phosphate buffered saline , pH 7.4, 150mM NaCl, 0.02% sodium azide and 50% glycerol.
Storage	Store at +4Λ C short term. Store at -20Λ C long term. Avoid freeze / thaw cycle.

## Application Details

WB:1:500~1:2000IHC:1:50~1:200

## Images



Western blot analysis of PR3 expression in HL60 cell lysate.

## Product Description

Polymorphonuclear leukocyte serine protease that degrades elastin, fibronectin, laminin, vitronectin, and collagen types I, III, and IV (in vitro) and causes emphysema when administered by tracheal insufflation to hamsters.

---

Note: This product is for in vitro research use only