

## FRA1 Rabbit mAb

Catalog No: #56771

Package Size: #56771-1 50ul #56771-2 100ul

Orders: order@signalwayantibody.com

Support: tech@signalwayantibody.com

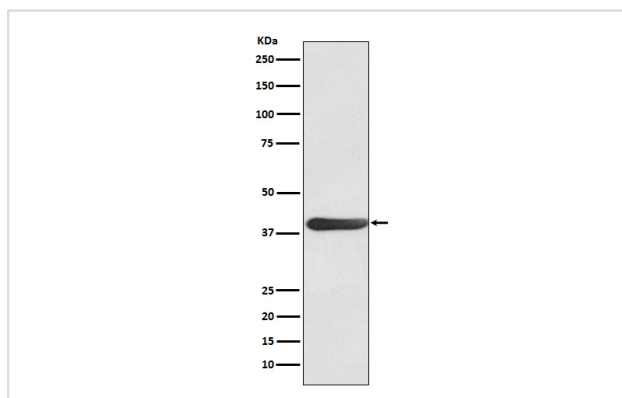
## Description

Product Name	FRA1 Rabbit mAb
Host Species	Rabbit
Clonality	Monoclonal
Isotype	Rabbit IgG
Purification	Affinity-chromatography
Applications	WB ICC/IF
Species Reactivity	Human
Specificity	FRA1 Antibody detects endogenous levels of total FRA1
Immunogen Description	A synthesized peptide derived from human FRA1
Other Names	FOS L1; FOS like antigen 1; FOSL1; FRA 1;
Accession No.	Uniprot:P15407
Uniprot	P15407
Calculated MW	39kDa
Formulation	Rabbit IgG in phosphate buffered saline , pH 7.4, 150mM NaCl, 0.02% sodium azide and 50% glycerol.
Storage	Store at +4Λ C short term. Store at -20Λ C long term. Avoid freeze / thaw cycle.

## Application Details

WB:1:500~1:2000 ICC/IF:1:50~1:200

## Images



Western blot analysis of FRA1 expression in HL60 cell lysate.

## Product Description

Belongs to the bZIP family. Fos subfamily.

Contains 1 bZIP domain.

---

Note: This product is for in vitro research use only