

WRN Rabbit mAb

Catalog No: #56776

Package Size: #56776-1 50ul #56776-2 100ul

Orders: order@signalwayantibody.com

Support: tech@signalwayantibody.com

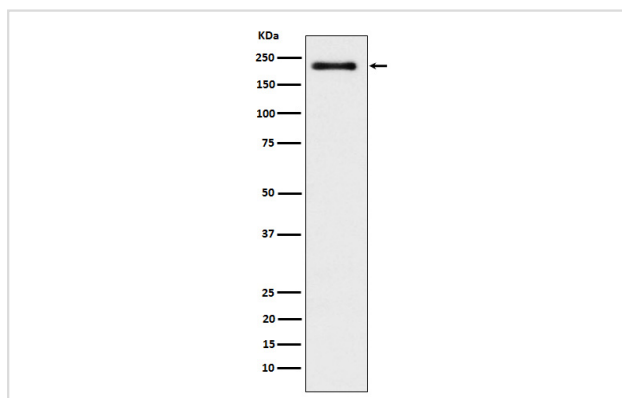
Description

Product Name	WRN Rabbit mAb
Host Species	Rabbit
Clonality	Monoclonal
Isotype	Rabbit IgG
Purification	Affinity-chromatography
Applications	WB
Species Reactivity	Human
Specificity	WRN Antibody detects endogenous levels of total WRN
Immunogen Description	A synthesized peptide derived from human WRN
Other Names	Exonuclease WRN; RecQ3; RECQL2; RECQL3; Werner syndrome helicase; WRN;
Accession No.	Uniprot:Q14191
Uniprot	Q14191
Calculated MW	200kDa
Formulation	Rabbit IgG in phosphate buffered saline , pH 7.4, 150mM NaCl, 0.02% sodium azide and 50% glycerol.
Storage	Store at +4 Λ C short term. Store at -20 Λ C long term. Avoid freeze / thaw cycle.

Application Details

WB: 1:500~1:2000

Images



Western blot analysis of WRN expression in K562 cell lysate.

Product Description

Multifunctional enzyme that has both magnesium and ATP-dependent DNA-helicase activity and 3'->5' exonuclease activity towards double-stranded DNA with a 5'-overhang. Has no nuclease activity towards single-stranded DNA or blunt-ended double-stranded DNA. Binds preferentially to DNA substrates containing alternate secondary structures, such as replication forks and Holliday junctions.

Note: This product is for in vitro research use only