

## CDC123 Rabbit mAb

Catalog No: #56778

Package Size: #56778-1 50ul #56778-2 100ul

Orders: order@signalwayantibody.com

Support: tech@signalwayantibody.com

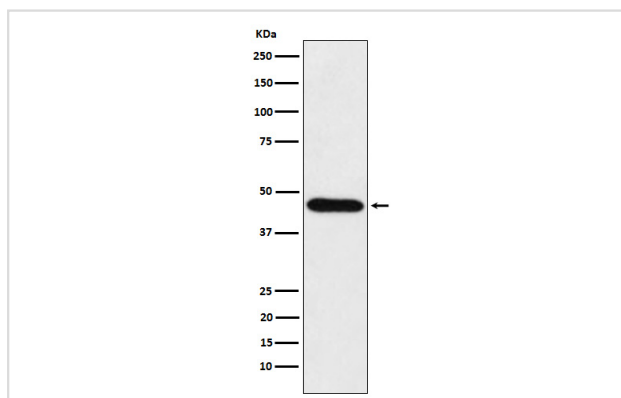
## Description

Product Name	CDC123 Rabbit mAb
Host Species	Rabbit
Clonality	Monoclonal
Isotype	Rabbit IgG
Purification	Affinity-chromatography
Applications	WB IP FC
Species Reactivity	Human Mouse Rat
Specificity	CDC123 Antibody detects endogenous levels of total CDC123
Immunogen Description	A synthesized peptide derived from human CDC123
Other Names	C10orf7; CDC123; Cell division cycle 123; D123; HT 1080; PZ32;
Accession No.	Uniprot:O75794
Uniprot	O75794
Calculated MW	39kDa
Formulation	Rabbit IgG in phosphate buffered saline , pH 7.4, 150mM NaCl, 0.02% sodium azide and 50% glycerol.
Storage	Store at +4Λ C short term. Store at -20Λ C long term. Avoid freeze / thaw cycle.

## Application Details

WB:1:500~1:2000IP:1:50FC:1:50

## Images



Western blot analysis of CDC123 expression in HeLa cell lysate.

## Product Description

Required for S phase entry of the cell cycle.

---

Note: This product is for in vitro research use only