

CCL21 Rabbit mAb

Catalog No: #56781

Package Size: #56781-1 50ul #56781-2 100ul

Orders: order@signalwayantibody.com

Support: tech@signalwayantibody.com

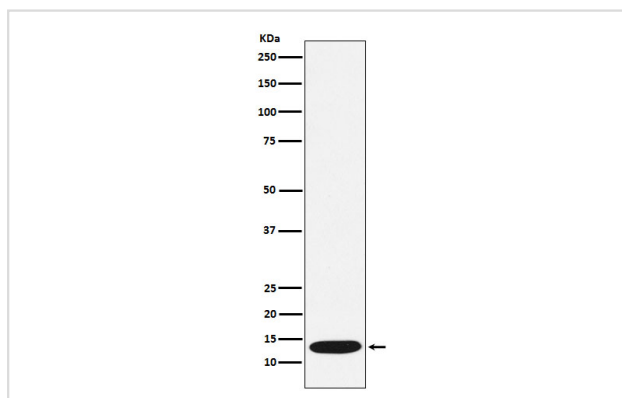
Description

Product Name	CCL21 Rabbit mAb
Host Species	Rabbit
Clonality	Monoclonal
Isotype	Rabbit IgG
Purification	Affinity-chromatography
Applications	WB
Species Reactivity	Human
Specificity	CCL21 Antibody detects endogenous levels of total CCL21
Immunogen Description	A synthesized peptide derived from human CCL21
Other Names	ECL; SLC; CKb9; TCA4; 6Ckine; SCYA21;
Accession No.	Uniprot:O00585
Uniprot	O00585
Calculated MW	15kDa
Formulation	Rabbit IgG in phosphate buffered saline , pH 7.4, 150mM NaCl, 0.02% sodium azide and 50% glycerol.
Storage	Store at +4Λ C short term. Store at -20Λ C long term. Avoid freeze / thaw cycle.

Application Details

WB: 1:500~1:2000

Images



Western blot analysis of CCL21 expression in Human CCL21 recombinant protein lysate.

Product Description

Inhibits hemopoiesis and stimulates chemotaxis. Chemotactic in vitro for thymocytes and activated T-cells, but not for B-cells, macrophages, or neutrophils. Shows preferential activity towards naive T-cells. May play a role in mediating homing of lymphocytes to secondary lymphoid organs.

Note: This product is for in vitro research use only