

SERCA1 ATPase Rabbit mAb

Catalog No: #56786

Package Size: #56786-1 50ul #56786-2 100ul

Orders: order@signalwayantibody.com

Support: tech@signalwayantibody.com

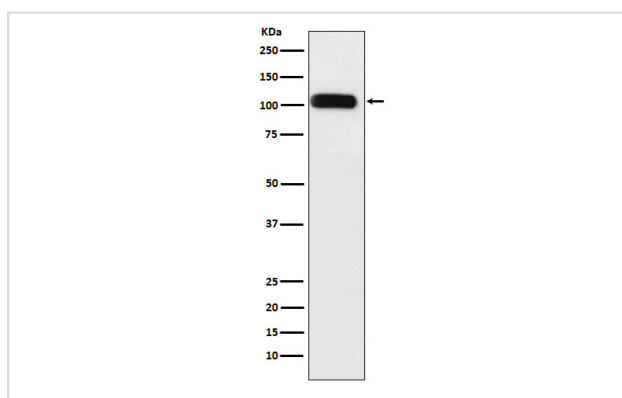
Description

Product Name	SERCA1 ATPase Rabbit mAb
Host Species	Rabbit
Clonality	Monoclonal
Isotype	Rabbit IgG
Purification	Affinity-chromatography
Applications	WB
Species Reactivity	Human Mouse Rat
Specificity	SERCA1 ATPase Antibody detects endogenous levels of total SERCA1 ATPase
Immunogen Description	A synthesized peptide derived from human SERCA1 ATPase
Other Names	ATP2A; ATP2A1; SERCA1;
Accession No.	Uniprot:O14983
Uniprot	O14983
Calculated MW	110kDa
Formulation	Rabbit IgG in phosphate buffered saline , pH 7.4, 150mM NaCl, 0.02% sodium azide and 50% glycerol.
Storage	Store at +4 Λ C short term. Store at -20 Λ C long term. Avoid freeze / thaw cycle.

Application Details

WB: 1:500~1:2000

Images



Western blot analysis of SERCA1 ATPase expression in Human fetal muscle lysate.

Product Description

Key regulator of striated muscle performance by acting as the major Ca²⁺ ATPase responsible for the reuptake of cytosolic Ca²⁺ into the sarcoplasmic reticulum.

Note: This product is for in vitro research use only