

## HIRA Rabbit mAb

Catalog No: #56787

Package Size: #56787-1 50ul #56787-2 100ul

Orders: order@signalwayantibody.com

Support: tech@signalwayantibody.com

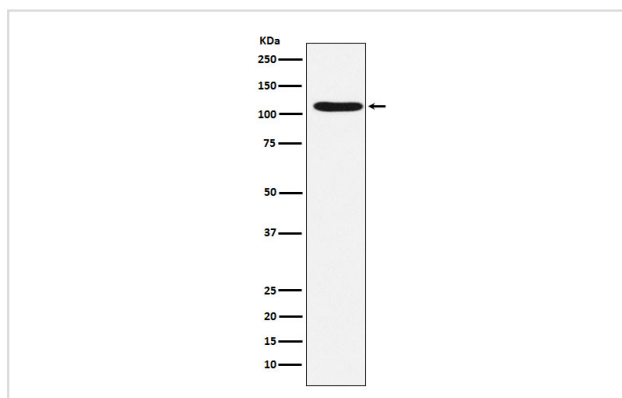
## Description

|                       |  |
|-----------------------|--|
| Product Name          | HIRA Rabbit mAb  |
| Host Species          | Rabbit   |
| Clonality             | Monoclonal   |
| Isotype               | Rabbit IgG   |
| Purification          | Affinity-chromatography  |
| Applications          | WB ICC/IF IP FC  |
| Species Reactivity    | Human  |
| Specificity           | HIRA Antibody detects endogenous levels of total HIRA  |
| Immunogen Description | A synthesized peptide derived from human HIRA  |
| Other Names           | DGCR1; HIR; HIRA; TUP 1; TUPLE1;   |
| Accession No.         | Uniprot:P54198   |
| Uniprot               | P54198   |
| Calculated MW         | 112kDa   |
| Formulation           | Rabbit IgG in phosphate buffered saline , pH 7.4, 150mM NaCl, 0.02% sodium azide and 50% glycerol. |
| Storage               | Store at +4 $\Lambda$ C short term. Store at -20 $\Lambda$ C long term. Avoid freeze / thaw cycle. |

## Application Details

WB:1:500~1:2000IC/IF:1:50~1:200IP:1:50FC:1:100

## Images



Western blot analysis of HIRA expression in HeLa cell lysate.

## Product Description

Cooperates with ASF1A to promote replication-independent chromatin assembly. Required for the periodic repression of histone gene transcription during the cell cycle.

---

Note: This product is for in vitro research use only