

ESE1 Rabbit mAb

Catalog No: #56788

Package Size: #56788-1 50ul #56788-2 100ul

Orders: order@signalwayantibody.com

Support: tech@signalwayantibody.com

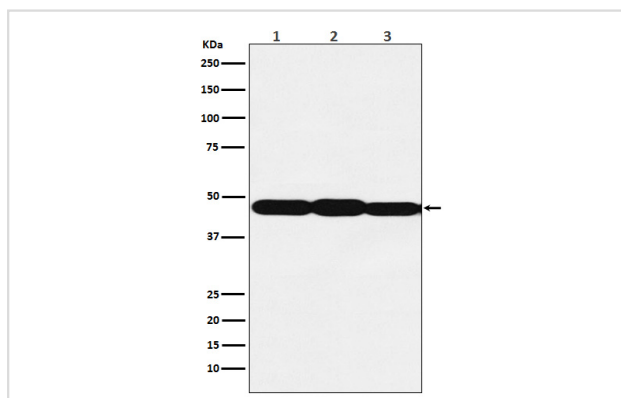
Description

Product Name	ESE1 Rabbit mAb
Host Species	Rabbit
Clonality	Monoclonal
Isotype	Rabbit IgG
Purification	Affinity-chromatography
Applications	WB FC
Species Reactivity	Human Mouse Rat
Specificity	ESE1 Antibody detects endogenous levels of total ESE1
Immunogen Description	A synthesized peptide derived from human ESE1
Other Names	Elf3; EPR1; ERT; ESE-1; ESX; jen;
Accession No.	Uniprot:P78545
Uniprot	P78545
Calculated MW	47kDa
Formulation	Rabbit IgG in phosphate buffered saline , pH 7.4, 150mM NaCl, 0.02% sodium azide and 50% glycerol.
Storage	Store at +4Λ C short term. Store at -20Λ C long term. Avoid freeze / thaw cycle.

Application Details

WB:1:500~1:2000FC:1:100

Images



Western blot analysis of ESE1 expression in (1) A431 cell lysate; (2) NIH/3T3 cell lysate; (3) C6 cell lysate.

Product Description

Transcriptional activator that binds and transactivates ETS sequences containing the consensus nucleotide core sequence GGA[AT]. Acts synergistically with POU2F3 to transactivate the SPRR2A promoter and with RUNX1 to transactivate the ANGPT1 promoter.

Note: This product is for in vitro research use only