

CHX10 Rabbit mAb

Catalog No: #56791

Package Size: #56791-1 50ul #56791-2 100ul

Orders: order@signalwayantibody.com

Support: tech@signalwayantibody.com

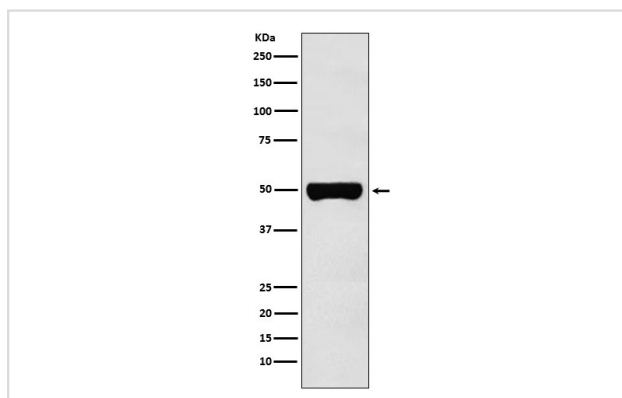
Description

Product Name	CHX10 Rabbit mAb
Host Species	Rabbit
Clonality	Monoclonal
Isotype	Rabbit IgG
Purification	Affinity-chromatography
Applications	WB FC
Species Reactivity	Human Mouse Rat
Specificity	CHX10 Antibody detects endogenous levels of total CHX10
Immunogen Description	A synthesized peptide derived from human CHX10
Other Names	CHX 10; HOX10; MCOP2; MCOPCB3; RET1; Vsx2;
Accession No.	Uniprot:P58304
Uniprot	P58304
Calculated MW	50kDa
Formulation	Rabbit IgG in phosphate buffered saline , pH 7.4, 150mM NaCl, 0.02% sodium azide and 50% glycerol.
Storage	Store at +4Λ C short term. Store at -20Λ C long term. Avoid freeze / thaw cycle.

Application Details

WB:1:500~1:2000FC:1:200

Images



Western blot analysis of CHX10 expression in Y79 cell lysate.

Product Description

Plays a significant role in the specification and morphogenesis of the sensory retina. May also participate in the development of the cells of the inner nuclear layer, particularly bipolar cells.

Note: This product is for in vitro research use only