

## ACVR2A Rabbit mAb

Catalog No: #56793

Package Size: #56793-1 50ul #56793-2 100ul

Orders: order@signalwayantibody.com

Support: tech@signalwayantibody.com

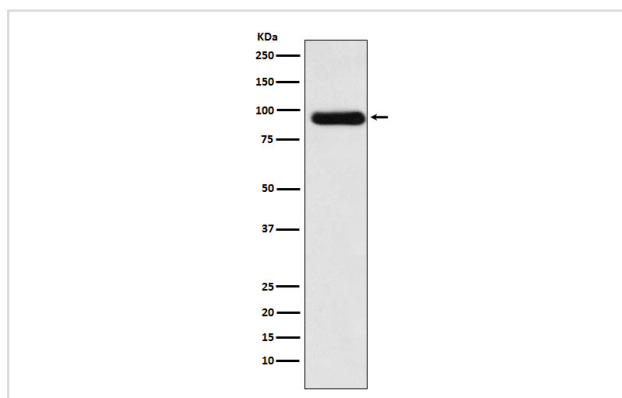
## Description

Product Name	ACVR2A Rabbit mAb
Host Species	Rabbit
Clonality	Monoclonal
Isotype	Rabbit IgG
Purification	Affinity-chromatography
Applications	WB
Species Reactivity	Human Mouse Rat
Specificity	ACVR2A Antibody detects endogenous levels of total ACVR2A
Immunogen Description	A synthesized peptide derived from human ACVR2A
Other Names	ACTR2; ACTRII; ACTRIIA; Acvr2; ACVR2A;
Accession No.	Uniprot:P27037
Uniprot	P27037
Calculated MW	85kDa
Formulation	Rabbit IgG in phosphate buffered saline , pH 7.4, 150mM NaCl, 0.02% sodium azide and 50% glycerol.
Storage	Store at +4 $\Lambda$ C short term. Store at -20 $\Lambda$ C long term. Avoid freeze / thaw cycle.

## Application Details

WB: 1:500~1:2000

## Images



Western blot analysis of Activin Receptor Type IIA expression in HeLa cell lysate.

## Product Description

On ligand binding, forms a receptor complex consisting of two type II and two type I transmembrane serine/threonine kinases. Type II receptors phosphorylate and activate type I receptors which autophosphorylate, then bind and activate SMAD transcriptional regulators. Receptor for activin A, activin B and inhibin A.

---

Note: This product is for in vitro research use only