

FXR1 Rabbit mAb

Catalog No: #56795

Package Size: #56795-1 50ul #56795-2 100ul

Orders: order@signalwayantibody.com

Support: tech@signalwayantibody.com

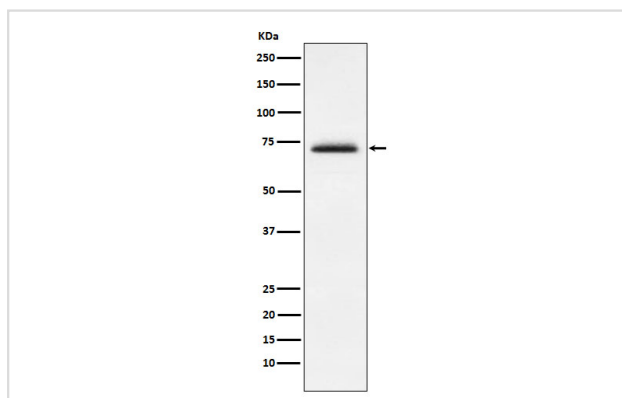
Description

Product Name	FXR1 Rabbit mAb
Host Species	Rabbit
Clonality	Monoclonal
Isotype	Rabbit IgG
Purification	Affinity-chromatography
Applications	WB IHC ICC/IF FC
Species Reactivity	Human Mouse Rat
Specificity	FXR1 Antibody detects endogenous levels of total FXR1
Immunogen Description	A synthesized peptide derived from human FXR1
Other Names	FXR1; FXR1P; hFXR1p;
Accession No.	Uniprot:P51114
Uniprot	P51114
Calculated MW	70-85kDa
Formulation	Rabbit IgG in phosphate buffered saline , pH 7.4, 150mM NaCl, 0.02% sodium azide and 50% glycerol.
Storage	Store at +4 Λ C short term. Store at -20 Λ C long term. Avoid freeze / thaw cycle.

Application Details

WB:1:500~1:2000IHC:1:50~1:200ICC/IF:1:50~1:200FC:1:50

Images



Western blot analysis of FXR1 expression in MCF7 cell lysate.

Product Description

RNA-binding protein required for embryonic and postnatal development of muscle tissue. May regulate intracellular transport and local translation of certain mRNAs.

Note: This product is for in vitro research use only