

## FKBP38 Rabbit mAb

Catalog No: #56798

Package Size: #56798-1 50ul #56798-2 100ul

Orders: order@signalwayantibody.com

Support: tech@signalwayantibody.com

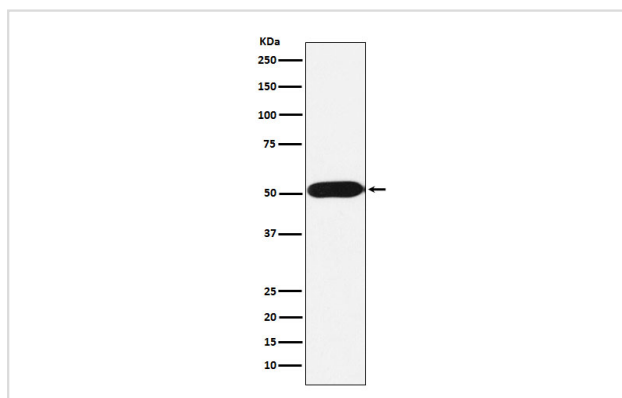
## Description

Product Name	FKBP38 Rabbit mAb
Host Species	Rabbit
Clonality	Monoclonal
Isotype	Rabbit IgG
Purification	Affinity-chromatography
Applications	WB ICC/IF FC
Species Reactivity	Human
Specificity	FKBP38 Antibody detects endogenous levels of total FKBP38
Immunogen Description	A synthesized peptide derived from human FKBP38
Other Names	FKBP 38; Fkbp8; FKBPR38; hFKBP38; Rotamase; Sam11;
Accession No.	Uniprot:Q14318
Uniprot	Q14318
Calculated MW	52kDa
Formulation	Rabbit IgG in phosphate buffered saline , pH 7.4, 150mM NaCl, 0.02% sodium azide and 50% glycerol.
Storage	Store at +4Λ C short term. Store at -20Λ C long term. Avoid freeze / thaw cycle.

## Application Details

WB:1:500~1:2000IC/IF:1:50~1:200FC:1:50

## Images



Western blot analysis of FKBP38 expression in Jurkat cell lysate.

## Product Description

Constitutively inactive PPIase, which becomes active when bound to calmodulin and calcium. Seems to act as a chaperone for BCL2, targets it to the mitochondria and modulates its phosphorylation state.

---

Note: This product is for in vitro research use only