

TCF4 Rabbit mAb

Catalog No: #56801

Package Size: #56801-1 50ul #56801-2 100ul

Orders: order@signalwayantibody.com

Support: tech@signalwayantibody.com

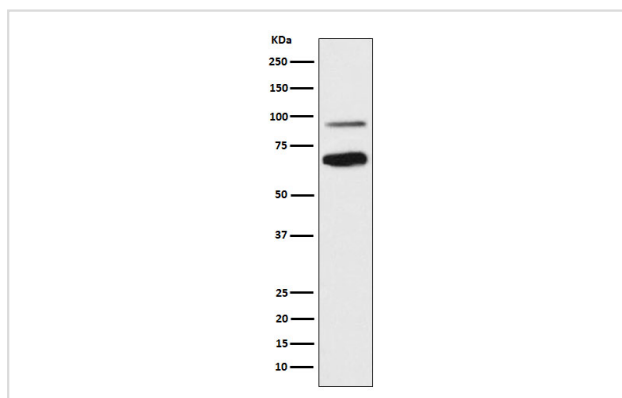
Description

Product Name	TCF4 Rabbit mAb
Host Species	Rabbit
Clonality	Monoclonal
Isotype	Rabbit IgG
Purification	Affinity-chromatography
Applications	WB IHC FC ChIP
Species Reactivity	Human
Specificity	TCF4 Antibody detects endogenous levels of total TCF4
Immunogen Description	A synthesized peptide derived from human TCF4
Other Names	E2-2; ITF2; PTHS; SEF2; ITF-2; SEF-2; TCF-4; SEF2-1; SEF2-1A; SEF2-1B; bHLHb19;
Accession No.	Uniprot:P15884
Uniprot	P15884
Calculated MW	71,90kDa
Formulation	Rabbit IgG in phosphate buffered saline , pH 7.4, 150mM NaCl, 0.02% sodium azide and 50% glycerol.
Storage	Store at +4Λ C short term. Store at -20Λ C long term. Avoid freeze / thaw cycle.

Application Details

WB:1:500~1:2000IHC:1:50~1:200FC:1:80ChIP

Images



Western blot analysis of TCF4 expression in SH-SY5Y cell lysate.

Product Description

Transcription factor that binds to the immunoglobulin enhancer Mu-E5/KE5-motif. Binds to the E-box present in the somatostatin receptor 2 initiator element (SSTR2-INR) to activate transcription (By similarity). Preferentially binds to either 5'-ACANNTGT-3' or 5'-CCANNTGG-3'.

Note: This product is for in vitro research use only