

## RhoGAP Rabbit mAb

Catalog No: #56804

Package Size: #56804-1 50ul #56804-2 100ul

Orders: order@signalwayantibody.com

Support: tech@signalwayantibody.com

## Description

Product Name	RhoGAP Rabbit mAb
Host Species	Rabbit
Clonality	Monoclonal
Isotype	Rabbit IgG
Purification	Affinity-chromatography
Applications	WB IHC FC
Species Reactivity	Human Mouse Rat
Specificity	RhoGAP Antibody detects endogenous levels of total RhoGAP
Immunogen Description	A synthesized peptide derived from human RhoGAP
Other Names	ARHGAP5; p190 B; p190 RhoGAP; Rho GTPase activating protein 5; RhoGAP; RhoGAP5;
Accession No.	Uniprot:Q13017
Uniprot	Q13017
Calculated MW	190kDa
Formulation	Rabbit IgG in phosphate buffered saline , pH 7.4, 150mM NaCl, 0.02% sodium azide and 50% glycerol.
Storage	Store at +4 $\Lambda$ C short term. Store at -20 $\Lambda$ C long term. Avoid freeze / thaw cycle.

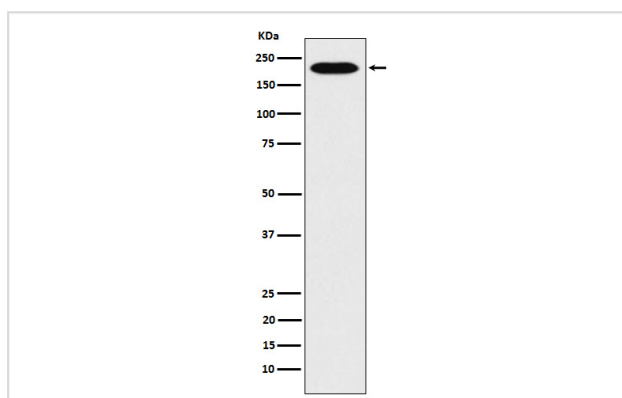
## Application Details

WB: 1:500~1:2000

IHC: 1:50~1:200

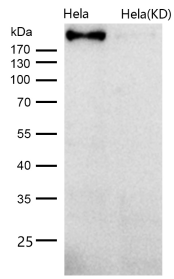
FC: 1:50

## Images



Western blot analysis of RhoGAP expression in HeLa cell lysate.

All lanes use the Antibody at 1:1K dilution for 1 hour at room temperature.



## Product Description

GTPase-activating protein for Rho family members (PubMed:8537347).

Note: This product is for in vitro research use only