

## KDM1 / LSD1 Rabbit mAb

Catalog No: #56807

Package Size: #56807-1 50ul #56807-2 100ul

Orders: order@signalwayantibody.com

Support: tech@signalwayantibody.com

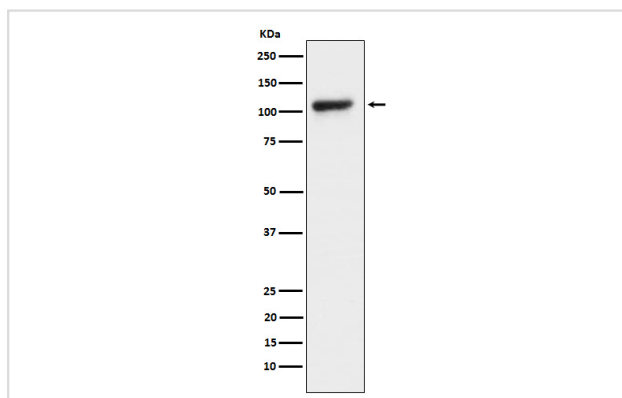
## Description

Product Name	KDM1 / LSD1 Rabbit mAb
Host Species	Rabbit
Clonality	Monoclonal
Isotype	Rabbit IgG
Purification	Affinity-chromatography
Applications	WB FC
Species Reactivity	Human Mouse Rat
Specificity	KDM1 / LSD1 Antibody detects endogenous levels of total KDM1 / LSD1
Immunogen Description	A synthesized peptide derived from human KDM1 / LSD1
Other Names	AOF2; CPRF; EC1; KDM1; Kdm1a; LSD1;
Accession No.	Uniprot:O60341
Uniprot	O60341
Calculated MW	110kDa
Formulation	Rabbit IgG in phosphate buffered saline , pH 7.4, 150mM NaCl, 0.02% sodium azide and 50% glycerol.
Storage	Store at +4Λ C short term. Store at -20Λ C long term. Avoid freeze / thaw cycle.

## Application Details

WB:1:500~1:2000FC:1:50

## Images



Western blot analysis of KDM1 / LSD1 expression in HeLa cell lysate.

## Product Description

Histone demethylase that demethylates both 'Lys-4' (H3K4me) and 'Lys-9' (H3K9me) of histone H3, thereby acting as a coactivator or a corepressor, depending on the context.

---

Note: This product is for in vitro research use only