

CXCL5 Rabbit mAb

Catalog No: #56810

Package Size: #56810-1 50ul #56810-2 100ul

Orders: order@signalwayantibody.com

Support: tech@signalwayantibody.com

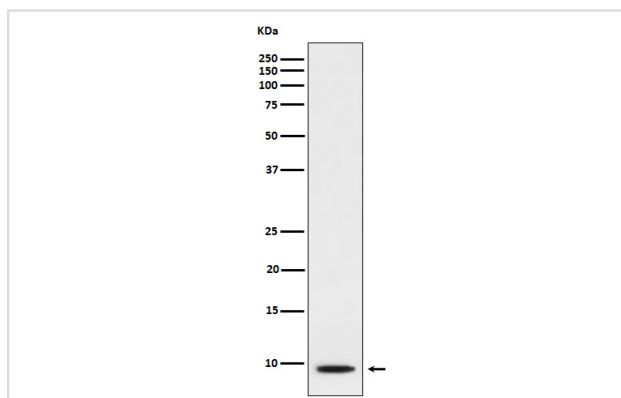
Description

Product Name	CXCL5 Rabbit mAb
Host Species	Rabbit
Clonality	Monoclonal
Isotype	Rabbit IgG
Purification	Affinity-chromatography
Applications	WB ICC/IF IP
Species Reactivity	Human
Specificity	CXCL5 Antibody detects endogenous levels of total CXCL5
Immunogen Description	A synthesized peptide derived from human CXCL5
Other Names	AMCFII; Cxcl5; ENA78; SCYB5;
Accession No.	Uniprot:P42830
Uniprot	P42830
Calculated MW	10kDa
Formulation	Rabbit IgG in phosphate buffered saline , pH 7.4, 150mM NaCl, 0.02% sodium azide and 50% glycerol.
Storage	Store at +4 Λ C short term. Store at -20 Λ C long term. Avoid freeze / thaw cycle.

Application Details

WB: 1:500~1:2000 ICC/IF: 1:50~1:200 IP: 1:50

Images



Western blot analysis of CXCL5 expression in A549 cell lysate treated with TNF alpha and TPA .

Product Description

Involved in neutrophil activation. In vitro, ENA-78(8-78) and ENA-78(9-78) show a threefold higher chemotactic activity for neutrophil granulocytes.

Note: This product is for in vitro research use only