

EDG3 Rabbit mAb

Catalog No: #56811

Package Size: #56811-1 50ul #56811-2 100ul

Orders: order@signalwayantibody.com

Support: tech@signalwayantibody.com

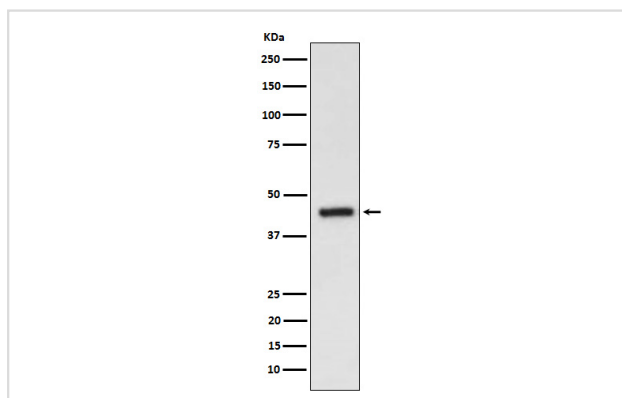
Description

Product Name	EDG3 Rabbit mAb
Host Species	Rabbit
Clonality	Monoclonal
Isotype	Rabbit IgG
Purification	Affinity-chromatography
Applications	WB IHC ICC/IF
Species Reactivity	Human
Specificity	EDG3 Antibody detects endogenous levels of total EDG3
Immunogen Description	A synthesized peptide derived from human EDG3
Other Names	EDG3; LPB3; S1P receptor 3; S1P3; S1pr3;
Accession No.	Uniprot:Q99500
Uniprot	Q99500
Calculated MW	42kDa
Formulation	Rabbit IgG in phosphate buffered saline , pH 7.4, 150mM NaCl, 0.02% sodium azide and 50% glycerol.
Storage	Store at +4Λ C short term. Store at -20Λ C long term. Avoid freeze / thaw cycle.

Application Details

WB:1:500~1:2000IHC:1:50~1:200ICC/IF:1:50~1:200

Images



Western blot analysis of EDG3 expression in HepG2 cell lysate.

Product Description

Receptor for the lysosphingolipid sphingosine 1-phosphate (S1P). S1P is a bioactive lysophospholipid that elicits diverse physiological effect on most types of cells and tissues. When expressed in rat HTC4 hepatoma cells, is capable of mediating S1P-induced cell proliferation and suppression of apoptosis.

Note: This product is for in vitro research use only