

Glycerol kinase Rabbit mAb

Catalog No: #56821

Package Size: #56821-1 50ul #56821-2 100ul

Orders: order@signalwayantibody.com

Support: tech@signalwayantibody.com

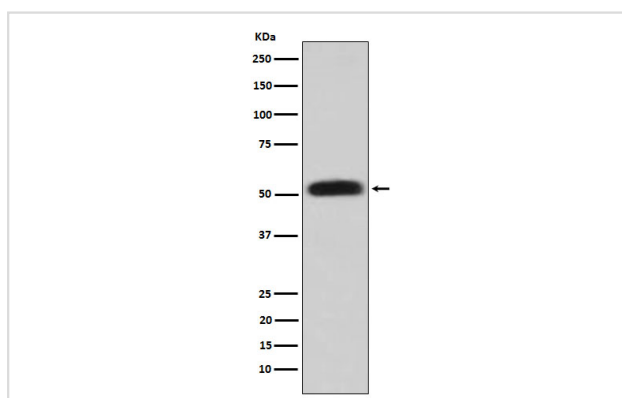
Description

Product Name	Glycerol kinase Rabbit mAb
Host Species	Rabbit
Clonality	Monoclonal
Isotype	Rabbit IgG
Purification	Affinity-chromatography
Applications	WB IP FC
Species Reactivity	Human Mouse Rat
Specificity	Glycerol kinase Antibody detects endogenous levels of total Glycerol kinase
Immunogen Description	A synthesized peptide derived from human Glycerol kinase
Other Names	GK1; GKD; Glycerokinase;
Accession No.	Uniprot:P32189
Uniprot	P32189
Calculated MW	50kDa
Formulation	Rabbit IgG in phosphate buffered saline , pH 7.4, 150mM NaCl, 0.02% sodium azide and 50% glycerol.
Storage	Store at +4Λ C short term. Store at -20Λ C long term. Avoid freeze / thaw cycle.

Application Details

WB:1:500~1:2000IP:1:50FC:1:50

Images



Western blot analysis of Glycerol kinase expression in HepG2 cell lysate.

Product Description

Key enzyme in the regulation of glycerol uptake and metabolism.

Note: This product is for in vitro research use only