

Kir2.1 Rabbit mAb

Catalog No: #56828

Package Size: #56828-1 50ul #56828-2 100ul

Orders: order@signalwayantibody.com

Support: tech@signalwayantibody.com

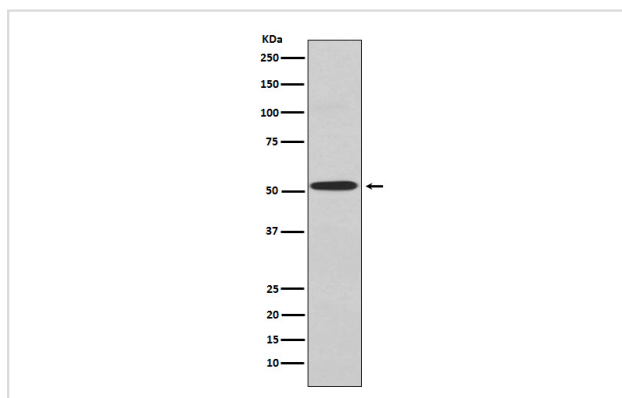
Description

Product Name	Kir2.1 Rabbit mAb
Host Species	Rabbit
Clonality	Monoclonal
Isotype	Rabbit IgG
Purification	Affinity-chromatography
Applications	WB IHC ICC/IF
Species Reactivity	Human Mouse Rat
Specificity	Kir2.1 Antibody detects endogenous levels of total Kir2.1
Immunogen Description	A synthesized peptide derived from human Kir2.1
Other Names	KCNJ2; ATFB9; HHBIRK1; IRK1; KIR2.1; LQT7; HIRK1; IRK-1; HHIRK1; SQT3;
Accession No.	Uniprot:P63252
Uniprot	P63252
Calculated MW	53kDa
Formulation	Rabbit IgG in phosphate buffered saline , pH 7.4, 150mM NaCl, 0.02% sodium azide and 50% glycerol.
Storage	Store at +4 Λ C short term. Store at -20 Λ C long term. Avoid freeze / thaw cycle.

Application Details

WB:1:500~1:2000IHC:1:50~1:200ICC/IF:1:50~1:200

Images



Western blot analysis of Kir2.1 expression in A549 cell lysate.

Product Description

Probably participates in establishing action potential waveform and excitability of neuronal and muscle tissues. Inward rectifier potassium channels are characterized by a greater tendency to allow potassium to flow into the cell rather than out of it.

Note: This product is for in vitro research use only