

Arg2 Rabbit mAb

Catalog No: #56834

Package Size: #56834-1 50ul #56834-2 100ul

Orders: order@signalwayantibody.com

Support: tech@signalwayantibody.com

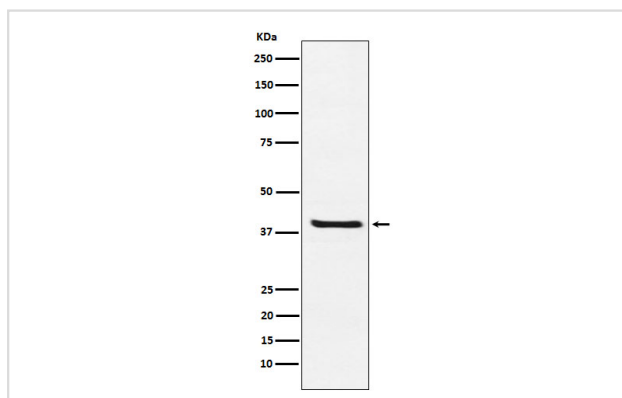
Description

Product Name	Arg2 Rabbit mAb
Host Species	Rabbit
Clonality	Monoclonal
Isotype	Rabbit IgG
Purification	Affinity-chromatography
Applications	WB ICC/IF FC
Species Reactivity	Human
Specificity	Arg2 Antibody detects endogenous levels of total Arg2
Immunogen Description	A synthesized peptide derived from human Arg2
Other Names	ARG2; Arginase-2; Type II arginase;
Accession No.	Uniprot:P78540
Uniprot	P78540
Calculated MW	39kDa
Formulation	Rabbit IgG in phosphate buffered saline , pH 7.4, 150mM NaCl, 0.02% sodium azide and 50% glycerol.
Storage	Store at +4Λ C short term. Store at -20Λ C long term. Avoid freeze / thaw cycle.

Application Details

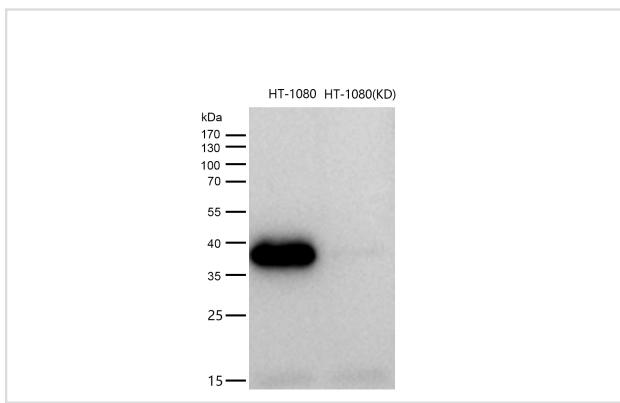
WB:1:500~1:2000ICC/IF:1:50~1:200FC:1:50

Images



Western blot analysis of Arg2 expression in 293T cell lysate.

All lanes use the Antibody at 1:1K dilution for 1 hour at room temperature.



Product Description

May play a role in the regulation of extra-urea cycle arginine metabolism and also in down-regulation of nitric oxide synthesis. Extrahepatic arginase functions to regulate L-arginine bioavailability to NO synthase.

Note: This product is for in vitro research use only