

## TROY Rabbit mAb

Catalog No: #56836

Package Size: #56836-1 50ul #56836-2 100ul

Orders: order@signalwayantibody.com

Support: tech@signalwayantibody.com

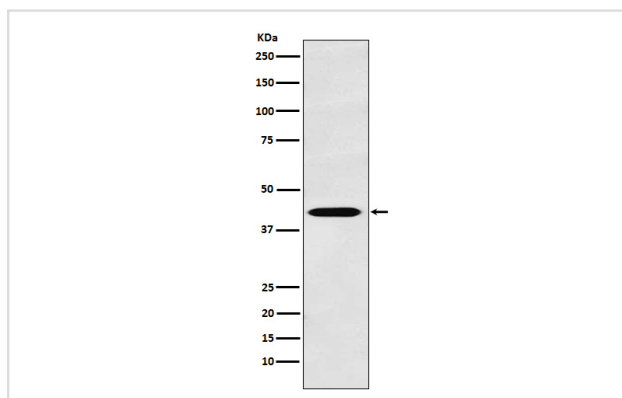
## Description

|                       |  |
|-----------------------|--|
| Product Name          | TROY Rabbit mAb  |
| Host Species          | Rabbit   |
| Clonality             | Monoclonal   |
| Isotype               | Rabbit IgG   |
| Purification          | Affinity-chromatography  |
| Applications          | WB IHC FC  |
| Species Reactivity    | Human Mouse Rat  |
| Specificity           | TROY Antibody detects endogenous levels of total TROY  |
| Immunogen Description | A synthesized peptide derived from human TROY  |
| Other Names           | TAJ alpha; TAJ; TNFRSF19; TRADE; TROY;   |
| Accession No.         | Uniprot:Q9NS68   |
| Uniprot               | Q9NS68   |
| Calculated MW         | 46kDa  |
| Formulation           | Rabbit IgG in phosphate buffered saline , pH 7.4, 150mM NaCl, 0.02% sodium azide and 50% glycerol. |
| Storage               | Store at +4Λ C short term. Store at -20Λ C long term. Avoid freeze / thaw cycle.                   |

## Application Details

WB:1:500~1:2000IHC:1:50~1:200FC:1:50

## Images



Western blot analysis of TROY expression in LnCaP cell lysate.

## Product Description

Can mediate activation of JNK and NF-kappa-B. May promote caspase-independent cell death.

---

Note: This product is for in vitro research use only