

RanBP9 Rabbit mAb

Catalog No: #56840

Package Size: #56840-1 50ul #56840-2 100ul

Orders: order@signalwayantibody.com

Support: tech@signalwayantibody.com

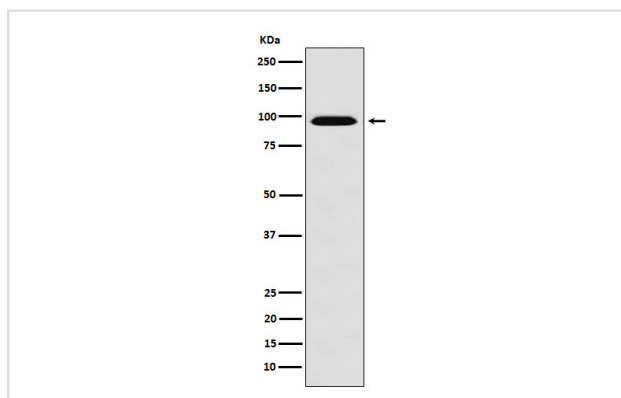
Description

Product Name	RanBP9 Rabbit mAb
Host Species	Rabbit
Clonality	Monoclonal
Isotype	Rabbit IgG
Purification	Affinity-chromatography
Applications	WB ICC/IF
Species Reactivity	Human Mouse Rat
Specificity	RanBP9 Antibody detects endogenous levels of total RanBP9
Immunogen Description	A synthesized peptide derived from human RanBP9
Other Names	BPM90; BPML; IBAP 1; Imp 9; Importin 9; Ran BP9; Ran-binding protein 9; RanBP7; RanBP9; RanBPM;
Accession No.	Uniprot:Q96S59
Uniprot	Q96S59
Calculated MW	91kDa
Formulation	Rabbit IgG in phosphate buffered saline , pH 7.4, 150mM NaCl, 0.02% sodium azide and 50% glycerol.
Storage	Store at +4Λ C short term. Store at -20Λ C long term. Avoid freeze / thaw cycle.

Application Details

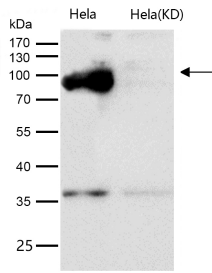
WB: 1:500~1:2000 ICC/IF: 1:50~1:200

Images



Western blot analysis of RanBP9 expression in HeLa cell lysate.

All lanes use the Antibody at 1:1K dilution for 1 hour at room temperature.



Product Description

May act as an adapter protein to couple membrane receptors to intracellular signaling pathways. May be involved in signaling of ITGB2/LFA-1 and other integrins. Enhances HGF-MET signaling by recruiting Sos and activating the Ras pathway. Involved in activation of androgen and glucocorticoid receptor in the presence of their cognate hormones.

Note: This product is for in vitro research use only